

CORPORATE CULTURE

企业文化

企业宗旨

以人为本 诚信务实 创新进取 回报社会


企业愿景

打造中国最大的电机生产基地

企业使命

产业报国 创造价值 服务社会 贡献人类

永发人以永发的繁荣和飞速发展见证着自己的勤奋、激情、智慧和忠诚。永发人更以精益求精，猛进如潮的敬业精神与诚信、公正、求实、创新的经营理念创造着人生与社会的财富。

- 
- YE2系列(IP55)高效率三相异步电动机
 - YE3系列(IP55)超高效率三相异步电动机
 - YVF2系列(IP54)变频调速三相异步电动机
 - YZR系列三相异步电动机
 - YZ系列三相异步电动机
 - Y系列(IP23)绕线转子三相异步电动机
 - YTS系列提升机专用二相异步电动机
 - YR系列(IP23)绕线转子三相异步电动机
 - YXQR、YXQS(IP23)系列高效三相异步电动机
 - YXQR500三相异步电动机
 - Y系列高压6KV、10KV三相异步电动机
 - YR系列高压6KV、10KV绕线转子三相异步电动机
 - YKK系列高压6KV、10KV二相异步电动机
 - YRKK系列高压6KV、10KV绕线转子三相异步电动机
 - YKS系列高压6KV、10KV空-水冷却三相异步电动机
 - YR系列大型三相异步电动机

承接各种特殊、非标电机设计制造及进口电机国产化

订货注意事项

ORDER MATTERS NEEDING ATTENTION

尊敬的客户：

您订货时除了需提供您所需的电机型号的基本参数外，还需注意如下一些问题，请务必认真阅读以下项次，以确保您的需求能够得到最满意、最迅速的答复。如没有提出特殊要求，我公司将默认按国标及我公司标准生产。

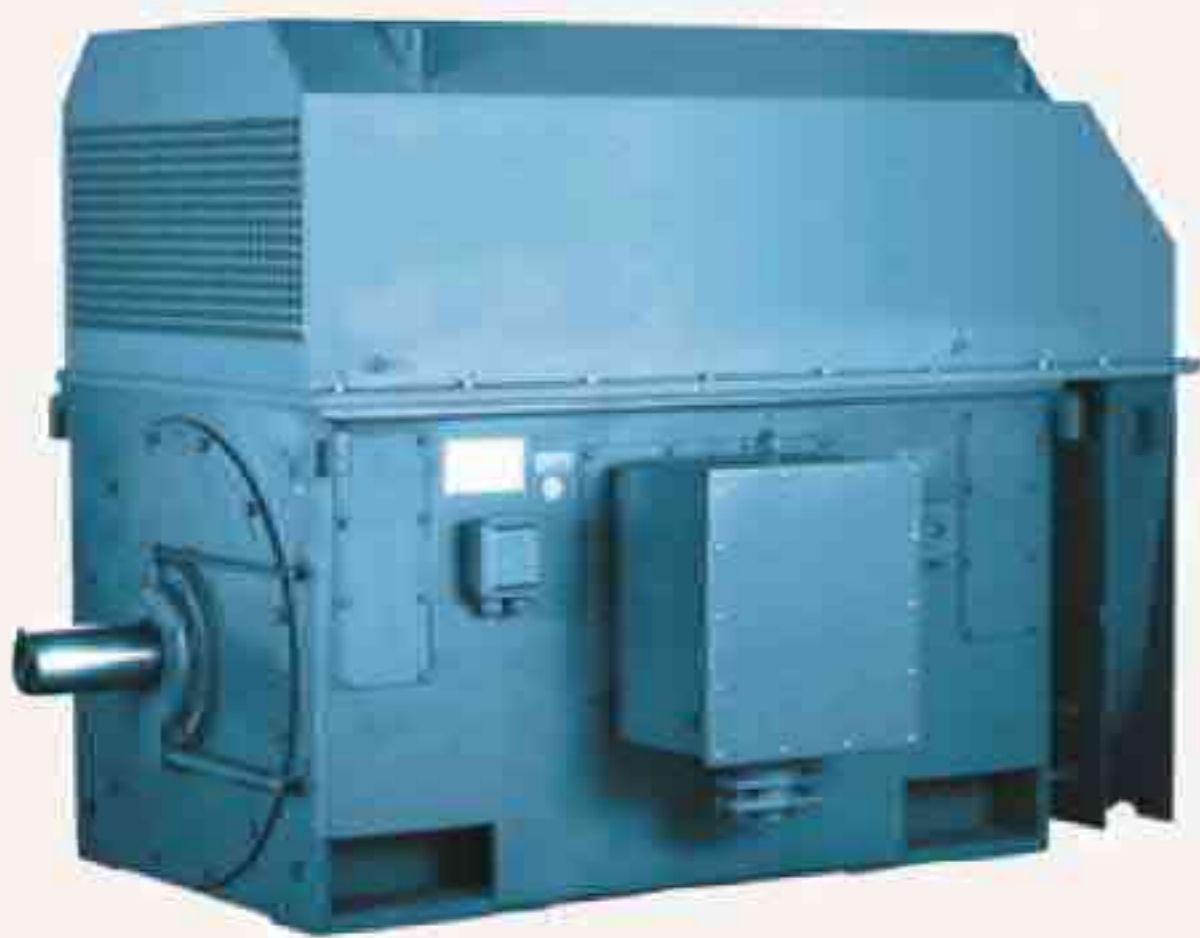
Dear customer:

You order in addition to provide the basic parameters of the motor model you need outside, still need to pay attention to the following questions, please read the following items, to ensure that your needs can be the most satisfactory and most prompt reply. If there is no special requirements, our company will be the default by the national standard and our company standard production.

- 1 噪声如果有特殊要求须提供给我们。（详见噪声国家标准）
- 2 振动如果有特殊要求须提供给我们（标准值为：振幅0.037mm；振幅2.3mm/s，详见振动国家标准）
- 3 启动次数如果有特殊要求须提供给我们（标准为冷态2次，热态1次）
- 4 旋转方向如果有特殊要求须告知我们（标准为从电机轴伸端往电机方向看为顺时针，高效电机必须注明旋向）
- 5 电机负载类型请提供给我们（如风机；水泵；磨机；破碎机；压缩机；轧钢机；磨盘机等）
- 6 负载转动惯量如果有特殊要求须提供给我们。
- 7 传动方式是什么请告知我们。（如带液力耦合器或带齿轮箱或直接链接）
- 8 联轴形式是什么请告知我们。（如联轴器或者皮带轮，皮带张力是多少也须告知）
- 9 电机上是否需提供编码器接口？
- 10 您所需电机是否在高原使用？（电机运行海拔超过1000米需特殊设计）
- 11 电机运行的环境温度是多少请告知我们。
- 12 电机是否在温热带地区使用？
- 13 电机是否在户外使用？
- 14 电机是否在海边使用？
- 15 防腐是否有要求？（如F1轻度腐蚀；F2中度腐蚀；F3强腐蚀）



- 1、 noise if there are special requirements to be provided to us. (see noise national standard)
- 2、 vibration if there are special requirements to be provided to us (the standard value is: amplitude 2.3mm/s; amplitude 0.037mm, see the vibration of the national standard)
- 3、 start times if there are special requirements to be provided to us (the standard for 2 cold, hot 1)
- 4、 rotation direction if there are special requirements shall inform us (the standard for the motor shaft extending from the end of the motor direction is clockwise, efficient motor must indicate the direction of rotation).
- 5、 please provide us type motor load (such as wind machine; water pump; mill; crusher; compressor; rolling mill; grinding machine etc.)
- 6、 load moment of inertia if there are special requirements to be provided to us.
- 7、 transmission mode is what please let us know. (such as with a hydraulic coupler or with a gear box or direct link)
- 8、 shaft form is anything please let us know. (such as coupling or pulley, belt tension is also required to inform)
- 9、 is the motor on the encoder interface?
- 10、 do you need the motor used in the plateau? (motor operated at an altitude of more than 1000 meters)
- 11、 how much is the temperature of the motor running, please let us know.
- 12、 is the motor used in the wet tropics?
- 13、 motor is used outdoors?
- 14 、 motor is used in the sea?
- 15、 is there a requirement for corrosion protection? (such as F1 slight corrosion; F2 moderate corrosion; F3 strong corrosion)



- 16 轴承采用何种型式？（如滚动轴承或者滑动轴承）是否需进口轴承？（SKF FAG NSK 国产）
- 17 轴承是否承受推力？
- 18 轴承是否有绝缘要求？
- 19 是否需要我们提供稀油站？
- 20 如果需要稀油站是否有特殊要求？（无要求即是采用国产元件）
- 21 您所需电机是否备品电机？是的话请提供我公司原电机的生产序号。
- 22 中性点是否需要引出？
- 23 是否需要CT？如果需要CT安装位置在主出线线盒还是中性点出线盒？
- 24 如果需要CT,数量是多少？
- 25 是否需要加装防潮加热器？
- 26 是否需要加装测振传感器？
- 27 测温元件是否有特殊要求？
- 28 转子鼠笼材料是否有特殊要求？（如铸铝、铜排、梯形铜排）
- 29 油漆颜色是否需要指定？（我公司默认颜色为室内“玉绿”、室外为“浅灰”，其它参考本资料附件的“油漆颜色P65-66）
- 30 电机是否需要双轴伸？
- 31 请明确出线盒位置（标准是从电机轴伸端往电机方向看出线盒安装在右边）
- 32 电机最大力矩倍数如果有特殊要求须提供给我们。
- 33 电机启动力矩倍数如果有特殊要求须提供给我们。
- 34 电机启动电流倍数如果有特殊要求须提供给我们。
- 35 功率 $\leq 355\text{kW}$ 的高效电机虽不在财政部补贴范围内，但建议客户仍然采用高效电机。
- 36 中心高 $\leq H710$ 的高效电机一律全部采用磁性槽楔。



16 what type of bearing? Is it necessary to import bearings (such as rolling bearings or plain bearings)? (SKF FAG
 NSK domestic)

17 bearing the thrust?

18 are bearing the insulation requirements?

19 do we need to provide a thin oil station?

20 if you need to dilute the oil station has special requirements? (no requirement for the use of domestic components)

21 you need whether the motor spare motor? Yes, please provide the production of our company's original motor serial number.

22 is the neutral point needed to be elicited?

23 do you need CT? If you need to install the CT in the main outlet box or the neutral point of the outlet box?

24 If you need CT, what is the number?

25 do you need to install a damp proof heater?

26 whether you need to install vibration sensors?

27 temperature measurement components are special requirements?

28 does the squirrel cage material have special requirements? (such as aluminum, copper, copper ladder)

29 paint color is required to specify? Our company (the default color for "green jade" indoor and outdoor "light", another reference to the information annex "paintColor P65-66)

30 whether the motor needs biaxial extension?

31 clear outlet box position (the standard is from the motor shaft extension end to the motor direction see the outlet box installed on the right side)

32 motor maximum torque ratio if there are special requirements shall be provided to us.

33 motor starting torque multiple if there are special requirements shall be provided to us.

34 motor starting current multiple if there are special requirements shall be provided to us.

35 power is less than 355kW, although not the motor in the Ministry of finance the scope of subsidies, but suggested that customers still using high performance motor.

36 high efficient motor center are all less than H710 using magnetic wedge.

YX YXKS YXKK 系列6KV/10KV、YCS10KV高效高压三相异步电动机

一、概述 OVERVIEW

YX、YXKS、YXKK YCS系列高效高压三相异步电动机是我公司21世纪的最新产品，积累了我公司多年的高压三相异步电动机系列设计制造的经验，开发出的新一代高效节能电机产品，可与普通Y系列高压三相异步电机互换，提高企业的运行效益，节能减排。

本系列电动机的功率等级和安装尺寸及公差均符合国家标准GB/T755《旋转电机定额和性能》国际电工委员会标准IEC34-1《旋转电机定额和性能》和GB/T13957及机械行业标准JB/T7593、JB/T10315.1、JB/T10315.2等。电气性能方面由于在上述标准基础上损耗降低了20%，从而效率值均有不同程度提高，其他电气性能符合上述标准要求。

本系列电动机的外壳防护等级根据GB/4942.1和IEC34-5《旋转电机外壳防护等级》的标准分别有IP23、IPW24、IP44和IP54四种。如果用户需要其它防护等级可另行供货。

本系列电动机的冷却方法根据GB/T1993和IEC34-6《旋转电机冷却方法》的标准分别有IC01、IC81W、IC611、IC616。如果用户需要其它冷却方法可另行供货。

本系列电动机的结构及安装型式为IMB3(卧式带底脚)，符合GB/T997和IEC34-7《电机结构及安装型式代号》的规定。

X, YXKS, YXKK, YCS series high voltage three-phase asynchronous motor is the company in twenty-first Century the latest products, our company accumulated years of high-voltage three-phase asynchronous motor series design and manufacturing experience, a new generation of energy efficient motor products developed, interchangeable with Y series high voltage three phase asynchronous motor, improve the operation efficiency of enterprises energy saving and emission reduction. This series of motor power rating and mounting dimensions conform to the national standard GB/T755 "motor rating and performance" the International Electrotechnical Commission Standard IEC34-1 "rating and performance of rotating electrical machines" and GB/T13957 and machinery industry standard JB/T7593, JB/T10315.1, JB/T10315.2 etc.. Electrical performance due to the loss of 20% on the basis of the above standards, resulting in a different degree of efficiency and improve the performance of other electrical performance in line with the above standards. According to the standard of GB/4942.1 and IEC34-5, the shell protection grade of the motor is IP23, IPW24, IP44 and IP54 four kinds of motors. If the user needs other protection level can be supplied separately. This series of motor cooling methods according to GB/T1993 and IEC34-6 "rotary motor cooling method" standards are IC01, IC81W, IC611, IC616. If the user needs other cooling methods can be supplied separately. The structure and installation of this series motors for IMB3 (horizontal with foot), comply with GB/T997 and IEC34-7 "motor structure and installation type code".

二、优势特点 ADVANTAGE CHARACTERISTIC

1. 优化的电磁设计

本系列电动机应用了有限元方法分析电磁性能、发热及机械应力和变形并进行了电磁优化设计，对尺寸、气缝、槽配合及槽形进行了全面优化，电机的尺寸达到合理的匹配，电机的性能达到最佳。

2. 低谐波绕组

本系列电动机采用低谐波绕组，降低电机的定子铜耗和杂散损耗，提高电机的运行效率。

3. 高强度磁性槽楔

我公司经过长期研究，采用高强度磁性槽楔，稳定的槽楔紧固工艺和材料，成功地解决了磁性槽楔脱落的问题，提高了电机的电气性能。



YX YXKS YXKK 系列6KV/10KV、YCS10KV高效高压三相异步电动机

4.优化的通风冷却系统

采用后倾离心式风扇，轴流风扇等，优化电机内、外通风系统，提高冷却效果，降低电机（特别是高速电机）的通风损耗，降低通风噪音，提高电机效率。

5.绝缘系统

本系列采用各种性能得到全面提升的绝缘系统，电压特性、温度特性、弯曲强度、击穿电压试验、热老化电老化试验均表明本系列绝缘系统达一流水平。本系列采用优质云母带，环保浸渍树脂并在数控绕线机、涨型机及包带机上完成线圈制造的每道工序，最后经VPI处理。因此绝缘性能可靠，机械强度高，防潮能力强。

6.高效率

本系列电机的效率在JB/T7593、JB/T10315.1、JB/T10315.2、GB/T13957的效率基础上降低损耗20%。达到IE2高效电机要求，为真正意义上的高效电机，可大幅度提高客户的运行效益，能为用户节电20%以上，为国家节能惠民工程产品。

1 Optimization of electromagnetic design

This series motor is used finite element method to analyze the electromagnetic and mechanical properties, heat stress and deformation and the optimized design, size, gas slot, slot matching and groove shape were optimized, the size of the motor to achieve a reasonable match, the best performance of the motor.

2 low harmonic winding

This series of motors with low harmonic winding, reduce the motor stator copper loss and stray loss, improve the efficiency of the operation of the motor.

3 high strength magnetic slot wedge

After a long time study, we have successfully solved the problem of the magnetic slot wedge off by using the high strength magnetic slot wedge and the stable slot wedge fastening technology.

4 optimized ventilation cooling system

The centrifugal fan, axial fan, motor, optimization of ventilation system, improve the cooling effect, reduce the motor (especially high-speed motor) of the ventilation loss, reducing ventilation noise, improve the motor efficiency.

5 insulation system

This series adopts various performance insulation system to enhance the voltage and temperature characteristics, flexural strength, breakdown voltage test, thermal aging electrical aging test show that this series of insulation system reached the first-class level. The series is made of high quality mica tape, and it is used in the numerical control winding machine, the up machine and the wrapping machine to finish the winding process. Therefore, the insulation performance is reliable, the mechanical strength is good, the moisture proof ability is strong.

6 high efficiency

The efficiency of this series motors reduce the loss of 20% in JB/T7593, JB/T10315.1, JB/T10315.2 efficiency based on IE2 and GB/T13957, achieve efficient motor requirements for high efficiency motors in real sense, can greatly improve the efficiency of customers, can save 20% more users for the country.Home energy saving engineering products.

三、使用范围 RANGE OF USE

本系列电动机可用于驱动各种通用机械如压缩机、通风机、水泵、切削机床、运输机械及其它机械设备，在矿山、机械行业、石化行业、发电厂等各种工矿企业中作原动机使用。用以驱动大转动惯量的鼓风机、磨煤机、轧钢机、卷扬机、破碎机、皮带机等机械的电动机应在订货时提供有关技术资料，签订技术协议，作为电机特殊设计的依据，并选用派生系列的专用电动机，以确保电机可靠运行。

电动机正常工作基本条件：

- a 海拔不超过1000m;
- b 最高环境空气温度不超过40℃；最低环境空气温度对采用滚动轴承的电动机为-15℃，对采用滑动轴承的电动机为5℃；对YXKS系列电动机为5℃；
- c 对YXKS系列电动机，冷却器入口处冷却水温度不超过33℃，最低温度为5℃；
- d 最湿月月平均最高相对湿度为90%，同时该月月平均最低温度不高于25℃；
- e 电源频率为50Hz±1%；
- f 工作电压变化范围不大于额定电压±5%；
- g 电动机定额为连续工作制SI。

四、型号说明

电动机型号按GB4831的规定由产品代号、规格代号二部分依次排列组成。产品代号由电机系列代号表示，含义如下：

This series of motors can be used to drive all kinds of general machinery, such as compressors, fans, pumps, cutting machine tools, transport machinery and other mechanical equipment. Mining, machinery industry, petrochemical industry, power plants and other industrial and mining enterprises for the use of the original motive. Air blower and coal mill for driving large moment of inertia, Motor hoist, rolling mill, crusher, belt machine should provide relevant technical data in order, signed a technical agreement, as a special motor Design basis, and the use of a series of special motor, in order to ensure the reliable operation of the motor. Basic conditions of normal operation of motor:

- A elevation is not more than 1000m;
- B maximum ambient air temperature is not more than 40 degrees Celsius; minimum ambient air temperature on the use of rolling bearings of the motor for -15 degrees C, the use of sliding bearingsThe machine is 5 degrees C and the YXKS series motor is 5;
- C YXKS on the C series motor, cooler at the entrance to the cooling water temperature is not more than 33 degrees, the minimum temperature of 5;
- D is the most humid month average maximum relative humidity of 90%, while the average monthly minimum temperature is not higher than 25 DEG c;
- E power frequency is 50Hz ± 1%;
- F The working voltage of F is not more than 5% of the rated voltage;
- G motor quota for continuous working system SI. Four, model description According to the provisions of GB4831 motor model by the product code, code, code, and the two parts of the order of the composition. Product code by the motor series code, including The meaning is as follows:

示例 Sample:





五、结构说明 STRUCTURE DESCRIPTION

YX为基本系列，防护等级为IP23.冷却方法为IC01。将其机座顶部防护罩拆去，并安装不同的防护罩（或冷却器）即可派生各种不同防护等级及冷却方法的电机，如YXKS(空-水冷却)、YXQF(气候防护)、YXKK(空-空冷却)等系列电机。

电动机采用国际上流的箱式结构，机座的端盖均由钢板焊接制成，刚度好、重量轻、拆下防护罩（或冷却器）后可以观察和触及电机内部，便于电动机的安装、维修。

定子采用外压装结构。定子绕组采用F级绝缘材料和防晕材料，绕组端部固定采用特殊绑扎工艺、牢固可靠，整个定子采用真空压力浸渍F级无溶剂漆（VPI）处理。由此，电动机具有优良可靠的绝缘性能和防潮、抗冲击能力。本系列电动机H355~H710均采用磁性槽楔，要求非磁性槽楔的用户,需要在订货时说明。

本系列电动机鼠笼转子大部分采用铜条转子，鼠笼铜条转子采用先进可靠的焊接工艺，并经槽内紧固处理。运行可靠，少量采用铸铝转子。

轴承有滚动轴承和滑动轴承两种形式，依电动机功率大小及转速而定，其基本形式的防护等级为IP44。如电机具有较高的防护等级时，轴承的防护等级也随之提高。

采用滚动轴承结构的电机均有不停机加油和排油装置。

主出线盒为密封结构，防护等级为IP54.一般装于电机右侧（从轴伸端看），根据用户需要也能装于左侧。出线盒的进线孔可朝上、下、左、右四周转换。盒内有单独的接地端子。

二极电机轴承采用滚动轴承（H355~450）或滑动轴承（H500以上）结构，滑动轴承采用油环和压力油循环复合润滑方式。

本系列电机的内、外风扇均有方向性，电机只能按指定旋向旋转。

二极电机外挂风机（冷却方式IC616）空-空冷却结构，需要低压电源。

YX for the basic series, the protection level of IP23, cooling method for IC01. The frame is to remove the protective cover, and the installation of different protective cover (or cooler) motor can be derived in different degrees of protection and cooling methods, such as YXKS (air cooling water), YXQF (climate protection), YXKK (air cooling) series motor.

The motor adopts box type structure of international upstream, the base end cover is made of steel plate and welding material, good rigidity, light weight, remove the protective cover (or cooler) can be observed and touch the inside of the motor, installation and maintenance for motor.

Stator adopts external pressure loading structure. The stator windings are class F insulation and anti corona material, winding end fixed with special binding process, firm and reliable, the stator adopts the vacuum pressure impregnation F solventless paint (VPI) treatment. As a result, the motor has excellent and reliable insulation performance and moisture, anti impact ability. This series of motor H355~H710 are using magnetic slot wedge, request the user of the non magnetic slot wedge, need to explain in order.

Most of the motor squirrel cage rotor of this series adopts copper strip rotor, the squirrel cage copper strip rotor adopts advanced and reliable welding technology, and the. Reliable operation, a small amount of the cast aluminum rotor.

Bearings are rolling bearings and sliding bearings in two forms, according to the motor power size and speed, the basic form of protection is IP44. If the motor has a high level of protection, the protection level of the bearing will also be improved. Motor with rolling bearing structure has no stopping machine and oil discharging device.

The main outlet box is sealed structure, the protection level of IP54. is generally installed on the right side of the motor (from the shaft extension end), can also be installed on the left side according to the user's need. Kezhao inlet hole of the outlet box up and down, left and right around the conversion. There is a separate ground terminal in the box.

Two pole motor rolling bearing sliding bearing (H355~450) or (H500) structure, sliding bearings with oil ring and oil circulation lubrication composite pressure. The internal and external fans of this series of motors are directional, and the motor can only rotate according to the specified direction. Two pole motor plug fan (cooling IC616) air-to-air cooling structure, need low voltage power supply.

YX YXKS YXKK 系列6KV/10KV、YCS10KV高效高压三相异步电动机

六、鼠笼异步电动机的起动 (YX、YXKS、YSKK系列)

鼠笼型异步电动机的转子采用了先进的计算技术来计算鼠笼转子的起动温度和应力。以防电动机因起动负载过重而导致电机早期损坏。

建议用户核查：(1) 被驱动机械设备转动部分的转动惯量 (折算到电动机转速后) 应不超过技术数据表中 (负载J) 项的数值；(2) 用户的电网应保证电动机在起动过程中的电机端电压不低于额定电压的85%；(3) 被传动机械的阻力矩特性为水泵、风机类阻力矩特性。

在上述条件下，电动机允许在实际冷状态下连续起动两次，电动机在两次起动之间为自然停车；或者在电动机热状态下起动一次。超出以上限制的再次起动电动机应在停车1小时以后。

如果需要电动机传动的机械转动部分的转动惯量超过技术数据表中的 (负载J) 数值，或要求频繁起动电动机，或有可能带重负载起动的电动机，务必请事先和制造厂联系协商，以便特殊设计，确保电动机的可靠起动。

二级电机外挂风机空-空冷却型结构，需要起动冷却风机后才能起动主电机。

Six, squirrel cage induction motor starting (YX, YXKS, YSKK Series)

The rotor of squirrel cage induction motor adopts advanced computing technology to calculate the starting temperature and stress of the squirrel cage rotor. In case the motor is damaged due to excessive starting load, the motor is damaged in early stage.

Users are advised to check: (1) driven by the rotation inertia part of the mechanical equipment (converted to motor speed) should not exceed the technical data sheets (load J) item value; (2) the grid user should ensure that the terminal voltage of the motor in the process of starting motor is not lower than the rated voltage (85%); (3) by the resistance torque characteristics of mechanical transmission for water pump and fan resistance torque characteristics.

Under the above conditions, the motor is allowed to start two times in the actual state of cold state, and the motor is naturally stopped between the two starting, or the motor is started at the time of the motor thermal state. Again starting motor beyond the above limits should be in the parking 1 hours later.

If you need to drive the mechanical rotation part of inertia over the data in a table (load J) value, or require frequent starting motor, or may have started with heavy load of the motor, please contact the manufacture and prior consultation, in order to ensure the reliability of special design, starting motor.

Cooling fan motor type plug-in air-to-air led, to start the cooling fan to start the main motor.

七、订货须知 ORDER NOTICE

请在订货时必须注明以下内容:

- (1) 电机型号: (YX500-4)
- (2) 额定频率: (50Hz)
- (3) 额定功率: (1000kW)
- (4) 额定电压: (6kV)
- (5) 极数: (4级)
- (6) 防护等级: (Ip23)

Please indicate the following in order:

- (1) motor model: (YX500-4)
- (2) rated frequency: (50Hz)
- (3) rated dynamic rate: (1000kW)
- (4) rated voltage: (6kV)
- (5) the number of poles: (Level 4)
- (6) protection level: (Ip23)



YX YXKS YXKK 系列6KV/10KV、YCS10KV高效高压三相异步电动机

- (7) 冷却方法: (IC01)
- (8) 安装型式: (IMB3)
- (9) 旋转方向: [顺时针方向 (面对电动机轴伸端看)]
- (10) 出线盒位置: [电动机右侧 (面对电动机轴伸端看)]



- (7) cooling method: (Ic01)
- (8) installation type: (IMB3)
- (9) the direction of rotation: [a clockwise direction (in the face of the motor shaft extension)]
- (10) outlet box position: [on the right side of the motor (in the face of the motor shaft extension)]

注意事项 MATTERS NEEDING ATTENTION :

- a 核查被驱动机械设备转动惯量 (折算到电动机的转速后), 请查阅前述第六章: 鼠笼型电动机的起动;
- b 如工作条件有变化或其它特殊要求, 需另签订技术协议方可签订订货合同;
- c 样本内表中所列的技术性数据均为保证值, 可列入技术协议中作考核标准。
- d 本系列电动机H355 - H710均采用磁性槽楔, 如有要求非磁性槽楔时在订货时言明。
- e 本系列电机的内、外风扇均有方向性, 订货时必须注明电机旋转方向。
- f 对进口件, 我公司仅采购该品牌产品而不限产地。
- g 我公司仅提供电动机必需的备品备件, 概不提供客户可在市场上采购到的标准的, 额外的附件 (如扳手、阀门等)。
- h 我公司可提供除样本以外的YRX、YRXKK、YXL、YXKSL、YXKKL等高效高压三相异步电动机, 需另签订技术协议方可签订订货合同。
- I 随着技术的进步和有关国内外标准的修改, 样本内技术数据及尺寸有所变动, 恕不可另行通知, 订货后请向我公司索取正式外形图。

A verification is driven mechanical equipment moment of inertia (translated to the motor speed), please refer to the sixth chapter: the starting of squirrel cage motor;

B if there are any changes in working conditions or other special requirements, it is necessary to sign a contract with another technical agreement;The technical data listed in the

C sample table are guaranteed value and can be included in the technical agreement as an examination standard.The

D series motor is H355 - H710 with magnetic slot wedge, if implicit in order requires non magnetic slot wedge.

E this series of motor, and the direction of the fan, ordering must indicate the direction of rotation of the motor.

F to import parts, I only buy the brand products and not limited origin.

G we only provide the necessary spare parts of motor, shall not provide customers available in the market to purchase standard, additional accessories (such as wrenches, valves etc.).

H our company can provide YRX, YRXKK, YXL, YXKSL, YXKKL and other high efficiency and high voltage three-phase asynchronous motor, other than the sample, need to signTechnical agreement can be signed order contract.

I with the progress of technology and relevant standards at home and abroad to modify the sample technical data and size changes, we can not be further notice, please contact our company to obtain a formal profile.

YX YXKS系列6KV高效高压三相异步电动机

YX(IP23)、YXKS(IP44)系列6KV技术数据

型号 Model	额定功率 Rated power (KW)	定子电流 stator current (A)	转速 speed (r/min)	效率 Efficiency (%)	功率因数 power factor (cos φ)	最大转矩 额定转矩 $\frac{T_M}{T_N}$	堵转转矩 额定转矩 $\frac{T_M}{T_N}$	额定电流 堵转电流 $\frac{I_M}{I_N}$	年节电量 Annual electricity (Kwh)	重量 Weight (kg)	
										YX	YXKS
355-2	220	26.1	2958	94.2 (92.8)	0.86	1.8	0.6	7.0	28187	1840	2130
	250	29.7	2958	94.3 (92.9)	0.86	1.8	0.6	7.0	31962	1940	2230
	280	33.2	2959	94.5 (93.1)	0.86	1.8	0.6	7.0	35645	2010	2300
	315	37.2	2960	94.8 (93.4)	0.86	1.8	0.6	7.0	39845	2070	2360
	355	41.9	2961	94.8 (93.7)	0.86	1.8	0.6	7.0	35169	2150	2440
	400	40.7	2960	95.2 (94.1)	0.86	1.8	0.6	7.0	39293	2240	2530
400-2	450	52.8	2969	95.4 (94.4)	0.86	1.8	0.6	7.0	39974	2450	2910
	500	57.8	2971	95.6 (94.6)	0.87	1.8	0.6	7.0	44229	2530	2990
	560	64.7	2971	95.7 (94.7)	0.87	1.8	0.6	7.0	49433	2610	3070
	630	72.7	2972	95.8 (94.9)	0.87	1.8	0.6	7.0	49893	2700	3160
450-2	710	81.9	2974	95.9 (95.0)	0.87	1.8	0.6	7.0	56111	3430	3870
	800	92.1	2974	96.1 (95.2)	0.87	1.8	0.6	7.0	62690	3570	4010
	900	103.5	2976	96.2 (95.3)	0.87	1.8	0.6	7.0	70682	3720	4160
	1000	113.5	2978	96.3 (95.4)	0.88	1.8	0.6	7.0	78371	3870	4310
500-2	1120	127.0	2980	96.4 (95.5)	0.88	1.8	0.6	7.0	87593	4920	5380
	1250	141.6	2980	96.5 (95.6)	0.88	1.8	0.6	7.0	97557	5120	5580
	1400	158.5	2979	96.6 (95.7)	0.88	1.8	0.6	7.0	109036	5320	5780
	1600	180.9	2979	96.7 (95.8)	0.88	1.8	0.6	7.0	124354	5520	5980
560-2	1800	204	2985	96.7 (95.9)	0.88	1.8	0.6	7.0	124225	7800	8500
	2000	226	2983	96.8 (96.0)	0.88	1.8	0.6	7.0	137741	8100	8800
	2240	253	2984	96.9 (96.1)	0.88	1.8	0.6	7.0	153950	8500	9200
630-2	2500	279	2981	96.9 (96.2)	0.89	1.8	0.6	7.0	150186	8590	9290
	2800	312	2982	97.0 (96.3)	0.89	1.8	0.6	7.0	167860	8920	9620
	3150	351	2983	97.0 (96.3)	0.89	1.8	0.6	7.0	188843	9360	10500

注：1、括号内效率值为国家标准值

2、年节电量(KWh)为每年按8000h计算值

YX YXKS系列6KV高效高压三相异步电动机

YX(IP23)、YXKS(IP44)系列6KV技术数据

型号 Model	额定功率 Rated power (KW)	定子电流 stator current (A)	转速 speed (r/min)	效率 Efficiency (%)	功率因数 power factor (cos φ)	最大转矩 额定转矩 $\frac{T_M}{T_N}$	堵转转矩 额定转矩 $\frac{T_{st}}{T_N}$	额定电流 堵转电流 $\frac{I_{st}}{I_N}$	年节电量 Annual electricity (Kwh)	重量 Weight (kg)	
										YX	YXKS
560-4	1600	179	1491	96.5 (95.7)	0.89	1.8	0.6	6.5	110882	6190	6790
	1800	201	1491	96.6 (95.8)	0.89	1.8	0.6	6.5	124483	6480	7080
	2000	224	1492	96.7 (95.9)	0.89	1.8	0.6	6.5	138027	6760	7360
630-4	2240	250	1492	96.8 (96.0)	0.89	1.8	0.6	6.5	154270	7840	8490
	2500	279	1493	96.9 (96.1)	0.89	1.8	0.6	6.5	171820	8240	8890
	2800	312	1493	96.9 (96.2)	0.89	1.8	0.6	6.5	168208	8640	9290
710-4	3150	359	1492	97.0 (96.3)	0.87	1.8	0.5	6.5	188643	12300	12600
	3550	405	1492	97.0 (96.3)	0.87	1.8	0.5	6.5	212823	12800	15100
	4000	456	1492	97.1 (96.4)	0.87	1.8	0.5	6.5	239305	13300	13600
	4500	513	1492	97.1 (96.4)	0.87	1.8	0.5	6.5	269218	13800	14100
	5000	562	1492	97.2 (96.5)	0.88	1.8	0.5	6.5	298514	14300	14600
800-4	5600	630	1492	97.2 (96.5)	0.88	1.8	0.5	6.5	334335	16700	17500
	6300	708	1492	97.3 (96.6)	0.88	1.8	0.5	6.5	375352	17500	18300
	7100	797	1494	97.3 (96.7)	0.88	1.8	0.5	6.5	422144	18300	19100
900-4	8000	897	1495	97.4 (96.8)	0.88	1.8	0.5	6.5	474676	22800	23700
	9000	1009	1492	97.5 (96.9)	0.88	1.8	0.5	6.5	457252	23900	24800
	10000	1107	1492	97.6 (97.0)	0.89	1.8	0.5	6.5	507014	25000	25900
355-6	220	27.3	987	94.4 (93.0)	0.82	1.8	0.7	6.0	28066	2020	2300
	250	31.0	988	94.7 (93.3)	0.82	1.8	0.7	6.0	31690	2080	2360
400-6	280	34.2	987	94.9 (93.5)	0.83	1.8	0.7	6.0	35343	2430	2780
	315	38.5	987	94.9 (93.7)	0.83	1.8	0.7	6.0	34008	2520	2870
	355	43.3	987	95.1 (93.9)	0.83	1.8	0.7	6.0	38164	2610	2960
	400	48.8	988	95.1 (94.0)	0.83	1.8	0.7	6.0	39376	2710	3060

注：1、括号内效率值为国家标准值

2、年节电量(KWh)为每年按8000h计算值



YX YXKS系列6KV高效高压三相异步电动机

YX(IP23)、YXKS(IP44)系列6KV技术数据

型号 Model	额定功率 Rated power (KW)	定子电流 stator current (A)	转速 speed (r/min)	效率 Efficiency (%)	功率因数 power factor (cos φ)	最大转矩 额定转矩 $\frac{T_M}{T_N}$	堵转转矩 额定转矩 $\frac{T_{st}}{T_N}$	额定电流 堵转电流 $\frac{I_{st}}{I_N}$	年节电量 Annual electricity (Kwh)	重量 Weight (kg)	
										YX	YXKS
450-6	450	54.0	989	95.4 (94.3)	0.84	1.8	0.7	6.0	44018	3230	3650
	500	59.2	989	95.6 (94.5)	0.85	1.8	0.7	6.0	48704	3330	3750
	560	66.2	989	95.7 (94.7)	0.85	1.8	0.7	6.0	49433	3430	3850
	630	74.4	989	95.8 (94.8)	0.85	1.8	0.7	6.0	55495	3660	4080
500-6	710	83.7	991	96.0 (95.0)	0.85	1.8	0.7	6.0	62281	4200	4660
	800	94.3	991	96.0 (95.1)	0.85	1.8	0.7	6.0	63091	4350	4810
	900	106.0	991	96.1 (95.2)	0.85	1.8	0.7	6.0	70830	4500	4960
	1000	117.7	990	96.2 (95.3)	0.85	1.8	0.7	6.0	78535	4700	5160
560-6	1120	130	993	96.3 (95.4)	0.86	1.8	0.7	6.5	87776	5720	6370
	1250	145	993	96.4 (95.5)	0.86	1.8	0.7	6.5	97760	6070	6720
	1400	163	993	96.4 (95.6)	0.86	1.8	0.7	6.5	97224	6420	7060
630-6	1600	186	993	96.5 (95.7)	0.86	1.8	0.7	6.5	110882	7300	8000
	1800	208	993	96.6 (95.8)	0.86	1.8	0.7	6.5	124483	7600	8300
	2000	231	993	96.7 (95.9)	0.86	1.8	0.7	6.5	138027	7900	8600
710-6	2240	259	993	96.7 (96.0)	0.86	1.8	0.6	6.5	135126	12050	12750
	2500	289	993	96.8 (96.1)	0.86	1.8	0.6	6.5	150498	12550	15250
	2800	323	993	96.9 (96.1)	0.86	1.8	0.6	6.5	192438	13050	15750
	3150	364	993	96.9 (96.2)	0.86	1.8	0.6	6.5	189234	13550	14250
	3550	410	993	96.9 (96.2)	0.86	1.8	0.6	6.5	213264	14050	14750
	4000	461	993	97.0 (96.3)	0.86	1.8	0.6	6.5	239800	14550	15250

注：1、括号内效率值为国家标准值

2、年节电量(KWh)为每年按8000h计算值



YX YXKS系列6KV高效高压三相异步电动机

YX(IP23)、YXKS(IP44)系列6KV技术数据

型号 Model	额定功率 Rated power (KW)	定子电流 stator current (A)	转速 speed (r/min)	效率 Efficiency (%)	功率因数 power factor (cos φ)	最大转矩 额定转矩 $\frac{T_M}{T_N}$	堵转转矩 额定转矩 $\frac{T_B}{T_N}$	额定电流 堵转电流 $\frac{I_N}{I_B}$	年节电量 Annual electricity (Kwh)	重量 Weight (kg)	
										YX	YXKS
710-2	3550	391	2987	97.0 (96.0)	0.90	1.8	0.6	7.0	304983	12500	12800
	4000	440	2988	97.1 (96.1)	0.90	1.8	0.6	7.0	342931	13000	13300
	4500	495	2989	97.1 (96.1)	0.90	1.8	0.6	7.0	385798	13600	13900
355-4	220	26.3	1481	94.7 (93.3)	0.85	1.8	0.7	6.5	27887	1830	2110
	250	29.9	1479	94.8 (93.4)	0.85	1.8	0.7	6.5	31623	1890	2170
	280	33.0	1480	94.9 (93.5)	0.86	1.8	0.7	6.5	35343	1960	2240
	315	37.1	1480	95.0 (93.6)	0.86	1.8	0.7	6.5	39676	2030	2310
400-4	355	41.8	1480	95.0 (93.8)	0.86	1.8	0.7	6.5	38245	2450	2810
	400	47.1	1480	95.1 (94.0)	0.86	1.8	0.7	6.5	39376	2520	2880
	450	52.8	1482	95.3 (94.2)	0.86	1.8	0.7	6.5	44111	2620	2970
	500	58.0	1481	95.4 (94.3)	0.87	1.8	0.7	6.5	48909	2710	3060
	560	64.8	1481	95.6 (94.5)	0.87	1.8	0.7	6.5	54548	2810	3160
450-4	630	72.7	1484	95.8 (94.8)	0.87	1.8	0.7	6.5	55495	3320	3740
	710	81.8	1484	96.0 (95.0)	0.87	1.8	0.7	6.5	62281	3440	3860
	800	92.2	1484	96.0 (95.1)	0.87	1.8	0.7	6.5	63091	3560	3980
	900	103.6	1484	96.1 (95.2)	0.87	1.8	0.7	6.5	70830	3780	4200
500-4	1000	115.0	1488	96.2 (95.3)	0.87	1.8	0.7	6.5	78535	4310	4770
	1120	127.2	1487	96.3 (95.4)	0.88	1.8	0.7	6.5	87776	4470	4930
	1250	141.8	1487	96.4 (95.5)	0.88	1.8	0.7	6.5	97760	4640	5100
	1400	158.8	1486	96.4 (95.6)	0.88	1.8	0.7	6.5	97224	4840	5300

注：1、括号内效率值为国家标准值

2、年节电量(KWh)为每年按8000h计算值

YX YXKS系列6KV高效高压三相异步电动机

YX(IP23)、YXKS(IP44)系列6KV技术数据

型号 Model	额定功率 Rated power (KW)	定子电流 stator current (A)	转速 speed (r/min)	效率 Efficiency (%)	功率因数 power factor (cos φ)	最大转矩 额定转矩 $\frac{T_M}{T_N}$	堵转转矩 额定转矩 $\frac{T_s}{T_N}$	额定电流 堵转电流 $\frac{I_s}{I_N}$	年节电量 Annual electricity (Kwh)	重量 Weight (kg)	
										YX	YXKS
800-6	4500	513	993	97.0 (96.3)	0.87	1.8	0.6	6.5	269776	17000	17700
	5000	569	994	97.1 (96.4)	0.87	1.8	0.6	6.5	299131	18000	18800
	5600	637	995	97.1 (96.5)	0.87	1.8	0.6	6.5	335027	19000	19800
900-6	6300	716	995	97.2 (96.5)	0.87	1.8	0.6	6.5	376127	24200	25100
	7100	807	995	97.3 (96.6)	0.87	1.8	0.6	6.5	485947	25200	26100
	8000	908	995	97.3 (96.7)	0.87	1.8	0.6	6.5	475656	26200	27100
400-8	220	28.8	740	94.3 (92.9)	0.78	1.8	0.8	5.5	28126	2490	2840
	250	32.3	740	94.4 (93.0)	0.79	1.8	0.8	5.5	31894	2590	2940
	280	36.1	740	94.6 (93.2)	0.79	1.8	0.8	5.5	35569	2700	3050
450-8	315	40.0	742	94.7 (93.4)	0.80	1.8	0.8	5.5	37038	3190	3610
	355	45.1	741	94.7 (93.5)	0.80	1.8	0.8	5.5	38489	3300	3720
	400	50.7	740	94.9 (93.7)	0.80	1.8	0.8	5.5	43184	3410	3830
	450	56.3	740	95.0 (93.8)	0.81	1.8	0.8	5.5	48479	3530	3950
500-8	500	62.3	742	95.4 (94.3)	0.81	1.8	0.8	5.5	48909	4090	4550
	560	68.8	742	95.5 (94.4)	0.82	1.8	0.8	5.5	54663	4230	4690
	630	77.3	742	95.6 (94.5)	0.82	1.8	0.8	5.5	61367	4380	4840
	710	87.2	742	95.6 (94.6)	0.82	1.8	0.8	5.5	62806	4560	5020
560-8	800	96	742	95.7 (94.7)	0.84	1.8	0.7	6.0	70618	5700	6300
	900	108	742	95.8 (94.8)	0.84	1.8	0.7	6.0	79279	5910	6510
	1000	119	743	95.9 (94.9)	0.84	1.8	0.7	6.0	87903	6030	6710

注：1、括号内效率值为国家标准值

2、年节电量(KWh)为每年按8000h计算值



YX YXKS系列6KV高效高压三相异步电动机

YX(IP23)、YXKS(IP44)系列6KV技术数据

型号 Model	额定功率 Rated power (KW)	定子电流 stator current (A)	转速 speed (r/min)	效率 Efficiency (%)	功率 因数 power factor (cos φ)	最大 转矩 转 T _{max} T _N	堵转 转矩 转 T _{st} T _N	额定 电流 堵转 I _{st} I _N	年节 电量 Annual electricity (Kwh)	重量 Weight (kg)	
										YX	YXKS
630-8	1120	134	744	96.0 (95.0)	0.84	1.8	0.7	6.0	98246	6780	7430
	1250	149	744	96.0 (95.1)	0.84	1.8	0.7	6.0	98580	7080	7730
	1400	167	744	96.1 (95.2)	0.84	1.8	0.7	6.0	110179	7380	8030
	1600	191	744	96.2 (95.3)	0.84	1.8	0.7	6.0	125656	7680	8330
710-8	1800	212	746	96.2 (95.4)	0.85	1.8	0.6	6.5	125525	11000	11300
	2000	235	746	96.3 (95.5)	0.85	1.8	0.6	6.5	139181	11500	11800
	2240	263	746	96.4 (95.6)	0.85	1.8	0.6	6.5	155558	12000	12300
	2500	293	746	96.5 (95.7)	0.85	1.8	0.6	6.5	173253	12500	12800
	2800	328	746	96.6 (95.8)	0.85	1.8	0.6	6.5	193640	13000	13300
800-8	3150	360	745	96.6 (95.8)	0.87	1.8	0.6	6.5	244822	16700	17500
	3550	406	745	96.7 (95.9)	0.87	1.8	0.6	6.5	244998	17200	18200
	4000	457	745	96.8 (96.0)	0.87	1.8	0.6	6.5	275482	17800	18800
900-8	4500	513	745	96.9 (96.1)	0.87	1.8	0.6	6.5	309225	22200	23100
	5000	570	745	96.9 (96.2)	0.87	1.8	0.6	6.5	342928	23100	24000
	5600	639	745	96.9 (96.2)	0.87	1.8	0.6	6.5	384080	24100	24900
1000-8	6300	718	745	97.0 (96.3)	0.87	1.8	0.6	6.0	377686	24900	25460
	7100	809	745	97.1 (96.4)	0.87	1.8	0.6	6.0	424766	26060	26860
	8000	910	745	97.2 (96.5)	0.87	1.8	0.6	6.0	477627	27460	28260
	9000	1023	745	97.3 (96.6)	0.87	1.8	0.6	6.0	536217	28860	29660
	10000	1135	745	97.3 (96.6)	0.87	1.8	0.6	6.0	680211	30260	31060
450-10	220	29.4	593	93.5 (92.1)	0.77	1.8	0.8	5.5	28613	3140	3600
	250	32.9	593	93.7 (92.3)	0.78	1.8	0.8	5.5	32376	3250	3710
	280	36.8	593	93.9 (92.5)	0.78	1.8	0.8	5.5	36105	3370	3830
	315	40.8	592	94.0 (92.6)	0.79	1.8	0.8	5.5	40531	3490	3950
	355	45.9	591	94.2 (92.8)	0.79	1.8	0.8	5.5	45483	3620	4080

注：1、括号内效率值为国家标准值

2、年节电量(KWh)为每年按8000h计算值

YX YXKS系列6KV高效高压三相异步电动机

YX(IP23)、YXKS(IP44)系列6KV技术数据

型号 Model	额定功率 Rated power (KW)	定子电流 stator current (A)	转速 speed (r/min)	效率 Efficiency (%)	功率因数 power factor (cos φ)	最大转矩 额定转矩 $\frac{T_M}{T_N}$	堵转转矩 额定转矩 $\frac{T_{st}}{T_N}$	额定电流 堵转电流 $\frac{I_{st}}{I_N}$	年节电量 Annual electricity (Kwh)	重量 Weight (kg)	
										YX	YXKS
500-10	400	50.9	592	94.6 (93.3)	0.80	1.8	0.8	5.5	47133	4020	4480
	450	57.2	592	94.6 (93.4)	0.80	1.8	0.8	5.5	48893	4170	4630
	500	63.4	592	94.8 (93.6)	0.80	1.8	0.8	5.5	54095	4320	4780
	560	71.0	592	94.9 (93.7)	0.80	1.8	0.8	5.5	60458	4480	4940
	630	79.8	592	95.0 (93.8)	0.80	1.8	0.8	5.5	67871	4680	5140
560-10	710	88	595	95.1 (94.0)	0.82	1.8	0.7	6.0	69893	5630	6280
	800	99	595	95.3 (94.2)	0.82	1.8	0.7	6.0	78420	5950	6600
	900	111	595	95.4 (94.3)	0.82	1.8	0.7	6.0	88037	6230	6880
630-10	1000	123	595	95.5 (94.4)	0.82	1.8	0.7	6.0	97613	6790	7440
	1120	137	595	95.6 (94.6)	0.82	1.8	0.7	6.0	99074	7090	7790
	1250	153	595	95.8 (94.8)	0.82	1.8	0.7	6.0	110110	7390	8090
	1400	171	595	95.9 (94.9)	0.82	1.8	0.7	6.0	123065	7690	8390
710-10	1600	193	595	95.9 (95.0)	0.83	1.8	0.6	6.0	126448	11600	11900
	1800	217	595	96.0 (95.1)	0.83	1.8	0.6	6.0	141956	12100	12400
	2000	241	595	96.1 (95.2)	0.83	1.8	0.6	6.0	157399	12600	12900
	2240	270	595	96.2 (95.3)	0.83	1.8	0.6	6.0	175919	13100	13400
800-10	2500	294	595	96.3 (95.4)	0.85	1.8	0.6	6.0	195929	16800	17600
	2800	329	595	96.4 (95.5)	0.85	1.8	0.6	6.0	218983	17500	18300
	3150	369	595	96.4 (95.6)	0.85	1.8	0.6	6.0	245843	18200	19000

注：1、括号内效率值为国家标准值

2、年节电量(KWh)为每年按8000h计算值



YX YXKS 系列6KV高效高压三相异步电动机

YX(IP23)、YXKS(IP44)系列6KV技术数据

型号 Model	额定功率 Rated power (KW)	定子电流 stator current (A)	转速 speed (r/min)	效率 Efficiency (%)	功率因数 power factor (cos φ)	最大转矩 额定转矩 $\frac{T_M}{T_N}$	堵转转矩 额定转矩 $\frac{T_H}{T_N}$	额定电流 堵转电流 $\frac{I_M}{I_N}$	年节电量 Annual electricity (Kwh)	重量 Weight (kg)	
										YX	YXKS
900-10	3550	416	595	96.5 (95.7)	0.85	1.8	0.6	6.0	276485	21300	23000
	4000	468	595	96.6 (95.8)	0.85	1.8	0.6	6.0	310886	23200	23900
	4500	527	595	96.6 (95.8)	0.85	1.8	0.6	6.0	349746	24000	24800
	5000	585	596	96.7 (95.9)	0.85	1.8	0.6	6.0	345068	24900	25700
1000-10	5600	656	596	96.7 (95.9)	0.85	1.8	0.6	6.0	386476	26900	27600
	6300	737	596	96.8 (96.0)	0.85	1.8	0.6	6.0	433884	28300	29000
	7100	830	596	96.8 (96.0)	0.85	1.8	0.6	6.0	488981	29700	30400
	8000	935	596	96.9 (96.1)	0.85	1.8	0.6	6.0	549823	31100	31800
450-12	220	31.2	493	92.8 (91.4)	0.73	1.8	0.8	5.5	29050	3390	3810
	250	35.4	493	93.1 (91.7)	0.73	1.8	0.8	5.5	32797	3500	3920
500-12	280	38.7	495	94.1 (92.7)	0.74	1.8	0.8	5.5	35951	3920	4380
	315	42.9	494	94.2 (92.8)	0.75	1.8	0.8	5.5	40358	4050	4510
	355	48.3	494	94.3 (93.0)	0.75	1.8	0.8	5.5	42099	4200	4660
	400	54.2	494	94.6 (93.3)	0.75	1.8	0.8	5.5	47133	4350	4810
	450	61.0	494	94.6 (93.4)	0.75	1.8	0.8	5.5	48893	4550	5010
560-12	500	64	494	94.9 (93.7)	0.79	1.8	0.7	6.0	53980	5510	6160
	560	72	494	95.0 (93.8)	0.79	1.8	0.7	6.0	60330	5860	6510
	630	81	494	95.1 (93.9)	0.79	1.8	0.7	6.0	67728	6210	6860
630-12	710	91	495	95.1 (94.0)	0.79	1.8	0.7	6.0	69893	7370	8070
	800	102	496	95.3 (94.2)	0.79	1.8	0.7	6.0	78420	7690	8390
	900	115	496	95.4 (94.3)	0.79	1.8	0.7	6.0	88037	8000	8700
	1000	127	495	95.5 (94.4)	0.79	1.8	0.7	6.0	97613	8330	9030

注：1、括号内效率值为国家标准值

2、年节电量(KWh)为每年按8000h计算值

YX YXKS系列6KV高效高压三相异步电动机

YX(IP23)、YXKS(IP44)系列6KV技术数据

型号 Model	额定功率 Rated power (KW)	定子电流 stator current (A)	转速 speed (r/min)	效率 Efficiency (%)	功率因数 power factor (cos φ)	最大转矩 额定转矩 $\frac{T_M}{T_N}$	堵转转矩 额定转矩 $\frac{T_s}{T_N}$	额定电流 堵转电流 $\frac{I_s}{I_N}$	年节电量 Annual electricity (Kwh)	重量 Weight (kg)	
										YX	YXKS
710-12	1120	143	496	95.5 (94.5)	0.79	1.8	0.6	6.0	99283	10750	11050
	1250	159	496	95.6 (94.6)	0.79	1.8	0.6	6.0	110573	11250	11550
	1400	178	496	95.7 (94.7)	0.79	1.8	0.6	6.0	123582	11750	12050
	1600	201	496	95.7 (94.7)	0.80	1.8	0.6	6.0	141237	12250	12550
	1800	226	496	95.8 (94.8)	0.80	1.8	0.6	6.0	158558	12750	13050
800-12	2000	244	496	95.9 (95.0)	0.82	1.8	0.6	6.0	175439	16450	17250
	2240	274	495	96.0 (95.1)	0.82	1.8	0.6	6.0	196080	17100	17900
	2500	305	496	96.1 (95.2)	0.82	1.8	0.6	6.0	218383	17750	18550
900-12	2800	341	496	96.2 (95.3)	0.82	1.8	0.6	6.0	244678	22300	22900
	3150	384	496	96.3 (95.4)	0.82	1.8	0.6	6.0	136825	23200	23800
	3550	432	496	96.4 (95.5)	0.82	1.8	0.6	6.0	277640	24200	24800
1000-12	4000	486	496	96.4 (95.6)	0.82	1.8	0.6	6.0	312182	25900	26500
	4500	547	496	96.4 (95.7)	0.82	1.8	0.6	6.0	311855	27200	27800
	5000	607	496	96.5 (95.8)	0.82	1.8	0.6	6.0	345786	28400	29100
	5600	680	496	96.5 (95.8)	0.82	1.8	0.6	6.0	387280	29700	30400

注：1、括号内效率值为国家标准值

2、年节电量(KWh)为每年按8000h计算值



YXKK系列6KV高效高压三相异步电动机

YXKK(IP44)、(IP54)系列6KV技术数据

型号 Model	额定功率 Rated power (KW)	定子电流 stator current (A)	转速 speed (r/min)	效率 Efficiency (%)	功率因数 power factor (cos φ)	最大转矩 额定转矩 $\frac{T_M}{T_N}$	堵转转矩 额定转矩 $\frac{T_{st}}{T_N}$	额定电流 堵转电流 $\frac{I_M}{I_N}$	年节电量 Annual electricity (Kwh)	重量 Weight (kg)
355-2	220	26.5	2964	94.0 (92.5)	0.85	1.8	0.6	7.0	30362	2260
	250	30.1	2964	94.1 (92.6)	0.85	1.8	0.6	7.0	34429	2360
	280	33.6	2965	94.2 (92.8)	0.85	1.8	0.6	7.0	35874	2460
	315	37.7	2966	94.5 (93.1)	0.85	1.8	0.6	7.0	40100	2560
400-2	355	42.0	2974	94.6 (93.4)	0.86	1.8	0.6	7.0	38571	2850
	400	47.2	2973	94.9 (93.7)	0.86	1.8	0.6	7.0	43184	2950
	450	52.9	2974	95.1 (94.0)	0.86	1.8	0.6	7.0	44298	3050
	500	58.7	2975	95.3 (94.2)	0.86	1.8	0.6	7.0	49013	3150
450-2	560	65.6	2977	95.5 (94.4)	0.86	1.8	0.6	7.0	54663	3810
	630	72.9	2977	95.6 (94.6)	0.87	1.8	0.6	7.0	55729	3930
	710	82.1	2977	95.7 (94.7)	0.87	1.8	0.6	7.0	62674	4050
	800	92.4	2979	95.8 (94.8)	0.87	1.8	0.6	7.0	70470	4180
500-2	900	103.7	2983	96.0 (95.0)	0.87	1.8	0.6	7.0	78947	6010
	1000	115.2	2982	96.0 (95.1)	0.87	1.8	0.6	7.0	78864	6200
	1120	128.9	2982	96.1 (95.2)	0.87	1.8	0.6	7.0	88143	6400
	1250	143.7	2982	96.2 (95.3)	0.87	1.8	0.6	7.0	98169	6600
560-2	1400	159	2983	96.3 (95.4)	0.88	1.8	0.6	7.0	109720	8580
	1600	181	2983	96.4 (95.5)	0.88	1.8	0.6	7.0	125133	9110
	1800	204	2983	96.4 (95.6)	0.88	1.8	0.6	7.0	125002	9340
630-2	2000	227	2983	96.5 (95.7)	0.88	1.8	0.6	7.0	138602	10500
	2240	254	2983	96.6 (95.8)	0.88	1.8	0.6	7.0	154912	11000
	2500	283	2983	96.7 (95.9)	0.88	1.8	0.6	7.0	172534	11500

注：1、括号内效率值为国家标准值

2、年节电量(KWh)为每年按8000h计算值

YXKK系列6KV高效高压三相异步电动机

YXKK(IP44)、(IP54)系列6KV技术数据

型号 Model	额定功率 Rated power (KW)	定子电流 stator current (A)	转速 speed (r/min)	效率 Efficiency (%)	功率因数 power factor (cos φ)	最大转矩 额定转矩 $\frac{T_M}{T_N}$	堵转转矩 额定转矩 $\frac{T_{st}}{T_N}$	额定电流 堵转电流 $\frac{I_M}{I_N}$	年节电量 Annual electricity (Kwh)	重量 Weight (kg)
355-4	185	22.2	1484	94.2 (92.8)	0.85	1.8	0.7	6.5	23702	2190
	200	24.0	1482	94.3 (92.9)	0.85	1.8	0.7	6.5	25569	2250
	220	26.4	1482	94.4 (93.0)	0.85	1.8	0.7	6.5	28066	2320
	250	29.9	1482	94.5 (93.1)	0.85	1.8	0.7	6.5	31826	2400
400-4	280	33.1	1482	94.6 (93.2)	0.86	1.8	0.7	6.5	35569	2720
	315	37.2	1482	94.7 (93.3)	0.86	1.8	0.7	6.5	39930	2800
	355	41.9	1482	94.7 (93.5)	0.86	1.8	0.7	6.5	38489	2880
	400	47.2	1484	94.9 (93.7)	0.86	1.8	0.7	6.5	43184	2970
	450	52.9	1483	95.1 (93.9)	0.86	1.8	0.7	6.5	48377	3070
450-4	500	58.8	1485	95.1 (94.0)	0.86	1.8	0.7	6.5	49220	3790
	560	65.7	1486	95.3 (94.2)	0.86	1.8	0.7	6.5	54894	3900
	630	73.8	1486	95.5 (94.4)	0.86	1.8	0.7	6.5	61496	4020
	710	83.1	1486	95.6 (94.6)	0.86	1.8	0.7	6.5	62806	4150
500-4	800	92.4	1490	95.8 (94.8)	0.87	1.8	0.7	6.5	70470	4770
	900	103.8	1489	95.9 (94.9)	0.87	1.8	0.7	6.5	79113	4900
	1000	115.2	1489	96.0 (95.0)	0.87	1.8	0.7	6.5	87719	5140
	1120	129.0	1488	96.0 (95.1)	0.87	1.8	0.7	6.5	88328	5320
560-4	1250	142	1492	96.1 (95.2)	0.88	1.8	0.6	6.5	98374	6970
	1400	159	1492	96.2 (95.3)	0.88	1.8	0.6	6.5	109949	7290
	1600	182	1492	96.3 (95.4)	0.88	1.8	0.6	6.5	125394	7610
630-4	1800	204	1492	96.4 (95.5)	0.88	1.8	0.6	6.5	140775	8730
	2000	227	1492	96.4 (95.6)	0.88	1.8	0.6	6.5	138891	9070
	2240	254	1492	96.5 (95.7)	0.88	1.8	0.6	6.5	155235	9410

注：1、括号内效率值为国家标准值

2、年节电量(KWh)为每年按8000h计算值



YXKK系列6KV高效高压三相异步电动机

YXKK(IP44)、(IP54)系列6KV技术数据

型号 Model	额定功率 Rated power (KW)	定子电流 stator current (A)	转速 speed (r/min)	效率 Efficiency (%)	功率因数 power factor (cos φ)	最大转矩 额定转矩 $\frac{T_M}{T_N}$	堵转转矩 额定转矩 $\frac{T_B}{T_N}$	额定电流 堵转电流 $\frac{I_B}{I_N}$	年节电量 Annual electricity (Kwh)	重量 Weight (kg)
710-4	2500	286	1491	96.6 (95.8)	0.87	1.8	0.5	6.5	172893	12500
	2800	321	1491	96.6 (95.9)	0.87	1.8	0.5	6.5	169258	13000
	3150	360	1491	96.7 (96.0)	0.87	1.8	0.5	6.5	190021	13500
	3550	406	1491	96.7 (96.0)	0.87	1.8	0.5	6.5	214150	14000
	4000	457	1491	96.8 (96.1)	0.87	1.8	0.5	6.5	240796	14500
	4500	514	1491	96.8 (96.1)	0.87	1.8	0.5	6.5	270896	15000
800-4	5000	571	1491	96.9 (96.2)	0.87	2.0	0.6	6.5	344353	20000
	5600	639	1491	96.9 (96.3)	0.87	2.0	0.6	6.5	326906	20900
	6300	719	1491	97.0 (96.3)	0.87	2.0	0.6	6.5	405713	21800
400-6	185	23.1	989	93.9 (92.4)	0.82	1.8	0.7	6.0	25587	2600
	200	24.9	988	94.1 (92.6)	0.82	1.8	0.7	6.0	27543	2670
	220	27.4	989	94.2 (92.8)	0.82	1.8	0.7	6.0	28187	2740
	250	31.1	988	94.4 (93.0)	0.82	1.8	0.7	6.0	31894	2860
	280	34.7	989	94.7 (93.3)	0.82	1.8	0.7	6.0	35493	2960
	315	39.0	989	94.9 (93.5)	0.82	1.8	0.7	6.0	39760	3080
450-6	355	43.4	990	94.9 (93.7)	0.83	1.8	0.7	6.0	38326	3770
	400	48.8	990	95.0 (93.8)	0.83	1.8	0.7	6.0	43093	3870
	450	54.8	990	95.2 (94.1)	0.83	1.8	0.7	6.0	44205	4000
	500	60.8	990	95.4 (94.3)	0.83	1.8	0.7	6.0	48909	4120

注：1、括号内效率值为国家标准值

2、年节电量(KWh)为每年按8000h计算值

YXKK系列6KV高效高压三相异步电动机

YXKK(IP44)、(IP54)系列6KV技术数据

型号 Model	额定功率 Rated power (KW)	定子电流 stator current (A)	转速 speed (r/min)	效率 Efficiency (%)	功率因数 power factor (cos φ)	最大转矩 额定转矩 $\frac{T_M}{T_N}$	堵转转矩 额定转矩 $\frac{T_B}{T_N}$	额定电流 堵转电流 $\frac{I_B}{I_N}$	年节电量 Annual electricity (Kwh)	重量 Weight (kg)
500-6	560	67.2	992	95.5 (94.4)	0.84	1.8	0.7	6.0	54663	4630
	630	75.5	992	95.6 (94.5)	0.84	1.8	0.7	6.0	61367	4750
	710	84.9	992	95.8 (94.8)	0.84	1.8	0.7	6.0	62542	4930
	800	95.6	992	95.9 (94.9)	0.84	1.8	0.7	6.0	70323	5080
560-6	900	106	994	96.0 (95.0)	0.85	1.8	0.7	6.5	78947	6590
	1000	118	994	96.0 (95.1)	0.85	1.8	0.7	6.5	78864	6870
	1120	132	994	96.1 (95.2)	0.85	1.8	0.7	6.5	88143	7190
630-6	1250	145	994	96.2 (95.3)	0.86	1.8	0.7	6.5	98169	8250
	1400	163	994	96.3 (95.4)	0.86	1.8	0.7	6.5	109720	8500
	1600	186	994	96.4 (95.5)	0.86	1.8	0.7	6.5	125133	8750
710-6	1800	209	994	96.4 (95.6)	0.86	1.8	0.7	6.5	125002	11550
	2000	232	994	96.5 (95.7)	0.86	2.0	0.6	6.5	138602	12150
	2240	260	994	96.5 (95.8)	0.86	2.0	0.6	6.5	135689	12750
	2500	290	994	96.6 (95.9)	0.86	2.0	0.6	6.5	151124	13350
	2800	324	994	96.7 (95.9)	0.86	2.0	0.6	6.5	193238	13950
	3150	364	994	96.7 (96.0)	0.86	2.0	0.6	6.5	190021	14550
	3550	411	994	96.7 (96.0)	0.86	2.0	0.6	6.5	214150	15150
800-6	4000	463	994	96.8 (96.1)	0.87	2.0	0.6	6.5	206610	19200
	4500	521	994	96.8 (96.1)	0.87	2.0	0.6	6.5	232436	20400
	5000	578	994	96.9 (96.2)	0.87	2.0	0.6	6.5	257728	21600

注：1、括号内效率值为国家标准值

2、年节电量(KWh)为每年按8000h计算值



YXKK系列6KV高效高压三相异步电动机

YXKK(IP44)、(IP54)系列6KV技术数据

型号 Model	额定功率 Rated power (KW)	定子电流 stator current (A)	转速 speed (r/min)	效率 Efficiency (%)	功率因数 power factor (cos φ)	最大转矩 额定转矩 $\frac{T_M}{T_N}$	堵转转矩 额定转矩 $\frac{T_M}{T_N}$	额定电流 堵转电流 $\frac{I_M}{I_N}$	年节电量 Annual electricity (Kwh)	重量 Weight (kg)
900-6	5600	646	995	96.9 (96.2)	0.86	2.0	0.6	6.5	336417	27000
	6300	727	995	97.0 (96.3)	0.86	2.0	0.6	6.5	377686	27900
400-8	185	24.3	742	94.0 (92.5)	0.78	1.8	0.8	5.5	25532	2800
	200	26.2	741	94.1 (92.7)	0.78	1.8	0.8	5.5	25679	2900
	220	28.8	741	94.3 (92.9)	0.78	1.8	0.8	5.5	28126	3000
450-8	250	32.3	742	94.4 (93.0)	0.79	1.8	0.8	5.5	31894	3700
	280	36.1	742	94.6 (93.2)	0.79	1.8	0.8	5.5	35569	3780
	315	40.5	741	94.7 (93.4)	0.79	1.8	0.8	5.5	37038	3900
	355	45.7	741	94.7 (93.5)	0.79	1.8	0.8	5.5	38489	4050
500-8	400	50.7	743	94.9 (93.7)	0.80	1.8	0.8	5.5	43184	4570
	450	57.0	743	95.0 (93.8)	0.80	1.8	0.8	5.5	48479	4700
	500	63.1	743	95.3 (94.2)	0.80	1.8	0.8	5.5	49013	4850
	560	70.5	743	95.5 (94.4)	0.80	1.8	0.8	5.5	54663	5000
560-8	630	77	744	95.6 (94.5)	0.82	1.8	0.7	6.0	61367	6550
	710	87	744	95.6 (94.6)	0.82	1.8	0.7	6.0	62806	6770
	800	98	744	95.7 (94.7)	0.82	1.8	0.7	6.0	70618	6970
630-8	900	108	745	95.8 (94.8)	0.84	1.8	0.7	6.0	79279	8060
	1000	119	745	95.9 (94.9)	0.84	1.8	0.7	6.0	87903	8260
	1120	134	745	96.0 (95.0)	0.84	1.8	0.7	6.0	98246	8460
	1250	149	745	96.0 (95.1)	0.84	1.8	0.7	6.0	98580	8660
710-8	1400	165	745	96.1 (95.2)	0.85	1.8	0.7	6.5	110179	11300
	1600	188	745	96.2 (95.3)	0.85	2.0	0.7	6.5	125656	11800
	1800	212	745	96.2 (95.4)	0.85	2.0	0.7	6.5	125525	12300
	2000	235	745	96.3 (95.5)	0.85	2.0	0.7	6.5	139181	12800
	2240	263	745	96.4 (95.6)	0.85	2.0	0.7	6.5	155558	13400
	2500	293	745	96.5 (95.7)	0.85	2.0	0.7	6.5	173253	14000

注：1、括号内效率值为国家标准值

2、年节电量(KWh)为每年按8000h计算值

YXKK系列6KV高效高压三相异步电动机

YXKK(IP44)、(IP54)系列6KV技术数据

型号 Model	额定功率 Rated power (KW)	定子电流 stator current (A)	转速 speed (r/min)	效率 Efficiency (%)	功率因数 power factor (cos φ)	最大转矩 额定转矩 $\frac{T_{\max}}{T_N}$	堵转转矩 额定转矩 $\frac{T_{st}}{T_N}$	额定电流 堵转电流 $\frac{I_{st}}{I_N}$	年节电量 Annual electricity (Kwh)	重量 Weight (kg)
800-8	2800	325	744	96.6 (95.8)	0.86	2.0	0.7	6.5	145551	18700
	3150	365	744	96.6 (95.9)	0.86	2.0	0.7	6.5	190812	19400
	3550	411	745	96.7 (95.9)	0.86	2.0	0.7	6.5	214569	20100
900-8	4000	458	745	96.8 (96.0)	0.87	2.0	0.7	6.5	207059	25600
	4500	515	745	96.9 (96.1)	0.87	2.0	0.7	6.5	232436	26500
	5000	572	745	96.9 (96.2)	0.87	2.0	0.7	6.5	214995	27400
1000-8	5600	640	745	96.9 (96.2)	0.87	2.0	0.6	6.5	288655	27460
	6300	720	746	97.0 (96.3)	0.87	2.0	0.6	6.5	270333	28860
	7100	810	746	97.1 (96.4)	0.87	2.0	0.6	6.5	304031	30260
	8000	913	745	97.2 (96.4)	0.87	2.0	0.6	6.5	342570	31660
450-10	185	25.4	594	93.3 (91.7)	0.75	1.8	0.8	5.5	27678	3700
	200	27.4	594	93.5 (91.9)	0.75	1.8	0.8	5.5	29793	3770
	220	30.1	594	93.7 (92.1)	0.75	1.8	0.8	5.5	32631	3870
	250	34.2	594	93.9 (92.3)	0.75	1.8	0.8	5.5	36922	3970
	280	38.2	593	94.0 (92.5)	0.75	1.8	0.8	5.5	38643	4100
500-10	315	42.3	594	94.2 (92.8)	0.76	1.8	0.8	5.5	40358	4650
	355	47.7	594	94.3 (93.0)	0.76	1.8	0.8	5.5	42099	4790
	400	53.6	594	94.5 (93.3)	0.76	1.8	0.8	5.5	43553	4930
	450	60.2	594	94.6 (93.4)	0.76	1.8	0.8	5.5	48893	5080
560-10	500	65	596	94.8 (93.6)	0.78	1.8	0.7	6.0	54095	6250
	560	73	596	94.9 (93.7)	0.78	1.8	0.7	6.0	60458	6430
	630	82	596	95.0 (93.8)	0.78	1.8	0.7	6.0	67871	6650
	710	92	596	95.1 (94.0)	0.78	1.8	0.7	6.0	69893	6870

注：1、括号内效率值为国家标准值

2、年节电量(KWh)为每年按8000h计算值



YXKK系列6KV高效高压三相异步电动机

YXKK(IP44)、(IP54)系列6KV技术数据

型号 Model	额定功率 Rated power (KW)	定子电流 stator current (A)	转速 speed (r/min)	效率 Efficiency (%)	功率因数 power factor (COS φ)	最大转矩 转额转矩 $\frac{T_M}{T_N}$	堵转转矩 转额转矩 $\frac{T_S}{T_N}$	额定电流 堵转电流 $\frac{I_M}{I_N}$	年节电量 Annual electricity (Kwh)	重量 Weight (kg)
630-10	800	101	596	95.3 (94.2)	0.80	1.8	0.7	6.0	78420	7670
	900	113	596	95.4 (94.3)	0.80	1.8	0.7	6.0	88037	7870
	1000	126	596	95.5 (94.4)	0.80	1.8	0.7	6.0	97613	8930
	1120	141	596	95.6 (94.6)	0.80	1.8	0.7	6.0	99074	9170
710-10	1250	149	594	95.8 (94.9)	0.84	2.0	0.7	6.0	98994	11700
	1400	167	594	95.9 (95.0)	0.84	2.0	0.7	6.0	110642	12100
	1600	191	594	95.9 (95.0)	0.84	5.0	0.7	6.0	126448	12500
	1800	215	594	96.0 (95.1)	0.84	2.0	0.7	6.0	141956	13000
	2000	238	594	96.1 (95.2)	0.84	2.0	0.7	6.0	157399	13600
800-10	2240	264	596	96.2 (95.3)	0.85	2.0	0.7	6.0	137111	18250
	2500	295	596	96.3 (95.4)	0.85	2.0	0.7	6.0	152706	18800
	2800	329	596	96.4 (95.5)	0.85	2.0	0.7	6.0	170674	19400
900-10	3150	370	596	96.4 (95.6)	0.85	2.0	0.7	6.0	191608	25600
	3550	417	596	96.5 (95.7)	0.85	2.0	0.7	6.0	184898	27400
	4000	470	596	96.6 (95.8)	0.85	2.0	0.7	6.0	173432	28300
	4500	528	596	96.6 (95.9)	0.85	2.0	0.7	6.0	194705	29100
1000-10	5000	587	596	96.7 (95.9)	0.85	2.0	0.7	6.0	216339	29500
	5600	657	596	96.7 (95.9)	0.85	2.0	0.7	6.0	290458	30900
	6300	739	596	96.8 (96.0)	0.85	2.0	0.7	6.0	184666	32300
450-12	185	27.2	494	93.4 (91.8)	0.70	1.8	0.8	5.5	27618	3920
	200	29.4	494	93.6 (92.0)	0.70	1.8	0.8	5.5	29729	4040
500-12	220	31.3	496	93.8 (92.2)	0.72	1.8	0.8	5.5	32561	4560
	250	35.5	496	94.0 (92.5)	0.72	1.8	0.8	5.5	34503	4670
	280	39.8	496	94.1 (92.7)	0.72	1.8	0.8	5.5	35951	4800
	315	44.7	496	94.2 (92.8)	0.72	1.8	0.8	5.5	40358	4950

注：1、括号内效率值为国家标准值

2、年节电量(KWh)为每年按8000h计算值

YXKK系列6KV高效高压三相异步电动机

YXKK(IP44)、(IP54)系列6KV技术数据

型号 Model	额定功率 Rated power (KW)	定子电流 stator current (A)	转速 speed (r/min)	效率 Efficiency (%)	功率因数 power factor (cos φ)	最大转矩 额定转矩 $\frac{T_{max}}{T_n}$	堵转转矩 额定转矩 $\frac{T_{st}}{T_n}$	额定电流 堵转电流 $\frac{I_{st}}{I_n}$	年节电量 Annual electricity (Kwh)	重量 Weight (kg)
560-12	355	49	496	94.3 (93.0)	0.74	1.8	0.7	6.0	42099	6670
	400	55	496	94.5 (93.3)	0.74	1.8	0.7	6.0	43553	6850
	450	62	496	94.6 (93.4)	0.74	1.8	0.7	6.0	48893	7040
	500	69	496	94.8 (93.7)	0.74	1.8	0.7	6.0	49534	7230
630-12	560	75	496	94.9 (93.8)	0.76	1.8	0.7	6.0	55361	8500
	630	84	496	95.0 (93.9)	0.76	1.8	0.7	6.0	62149	8730
	710	95	496	95.1 (94.0)	0.76	1.8	0.7	6.0	69893	8980
	800	106	496	95.3 (94.2)	0.76	1.8	0.7	6.0	78420	9130
710-12	900	116	495	95.4 (94.3)	0.78	2.0	0.7	6.0	88037	10850
	1000	129	495	95.5 (94.4)	0.78	2.0	0.7	6.0	97613	11250
	1120	145	495	95.5 (94.5)	0.78	2.0	0.7	6.0	99283	11650
	1250	161	495	95.6 (94.6)	0.78	2.0	0.7	6.0	110573	12150
	1400	178	495	95.7 (94.7)	0.79	2.0	0.7	6.0	123582	12750
	1600	204	495	95.7 (94.8)	0.79	2.0	0.7	6.0	126979	13350
800-12	1800	223	495	95.8 (94.9)	0.81	2.0	0.7	6.0	158226	18000
	2000	247	495	95.9 (95.0)	0.81	2.0	0.7	6.0	175439	18600
	2240	277	496	96.0 (95.1)	0.81	2.0	0.7	6.0	196046	19200
900-12	2500	309	496	96.1 (95.2)	0.81	2.0	0.7	6.0	218383	25200
	2800	346	496	96.2 (95.3)	0.81	2.0	0.7	6.0	219899	26200
	3150	388	496	96.3 (95.4)	0.81	2.0	0.7	6.0	246870	27100
1000-12	3550	432	497	96.4 (95.5)	0.82	2.0	0.7	6.0	277659	28500
	4000	487	497	96.4 (95.6)	0.82	2.0	0.7	6.0	277785	29800
	4500	547	497	96.4 (95.7)	0.82	2.0	0.7	6.0	311855	31100

注：1、括号内效率值为国家标准值

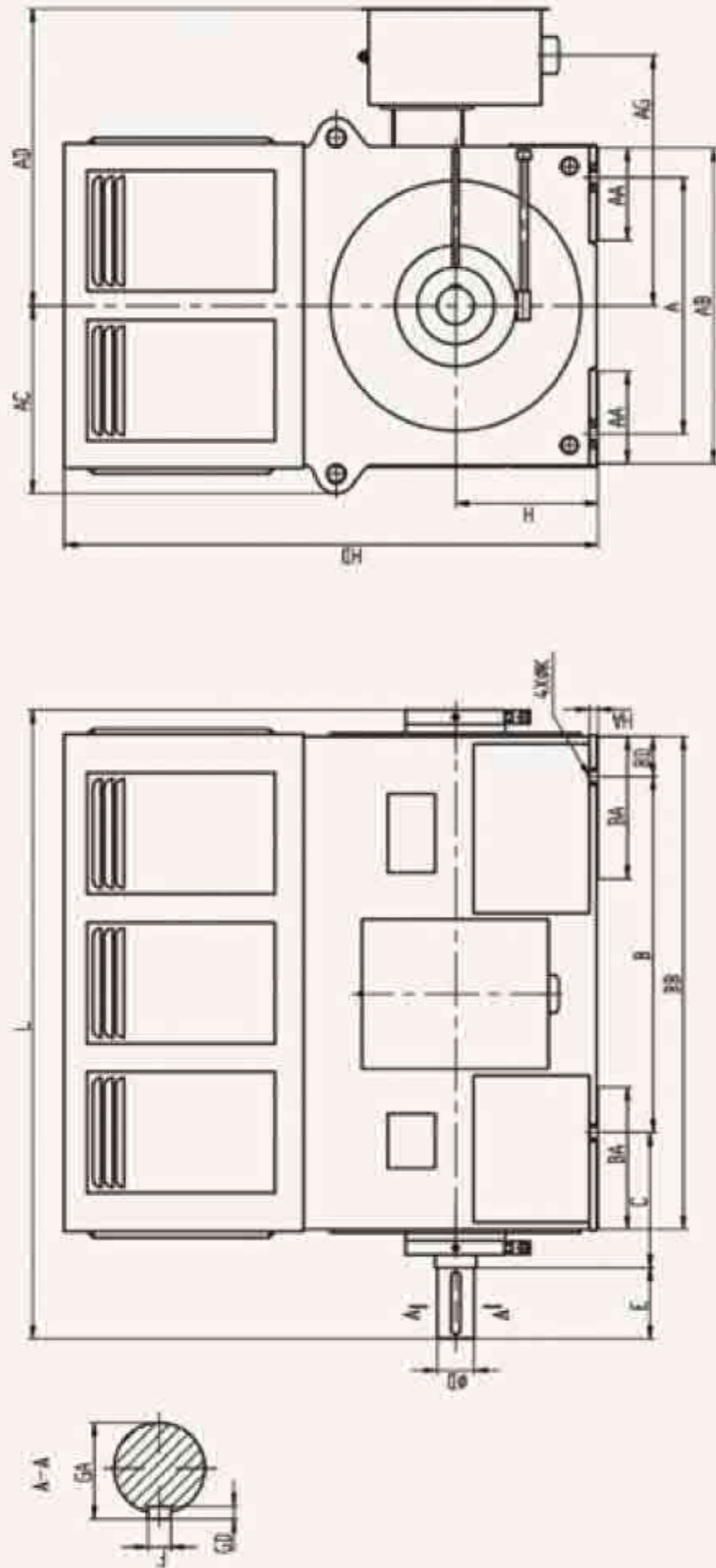
2、年节电量(KWh)为每年按8000h计算值

YX系列6KV高效高压三相异步电动机



永发机电

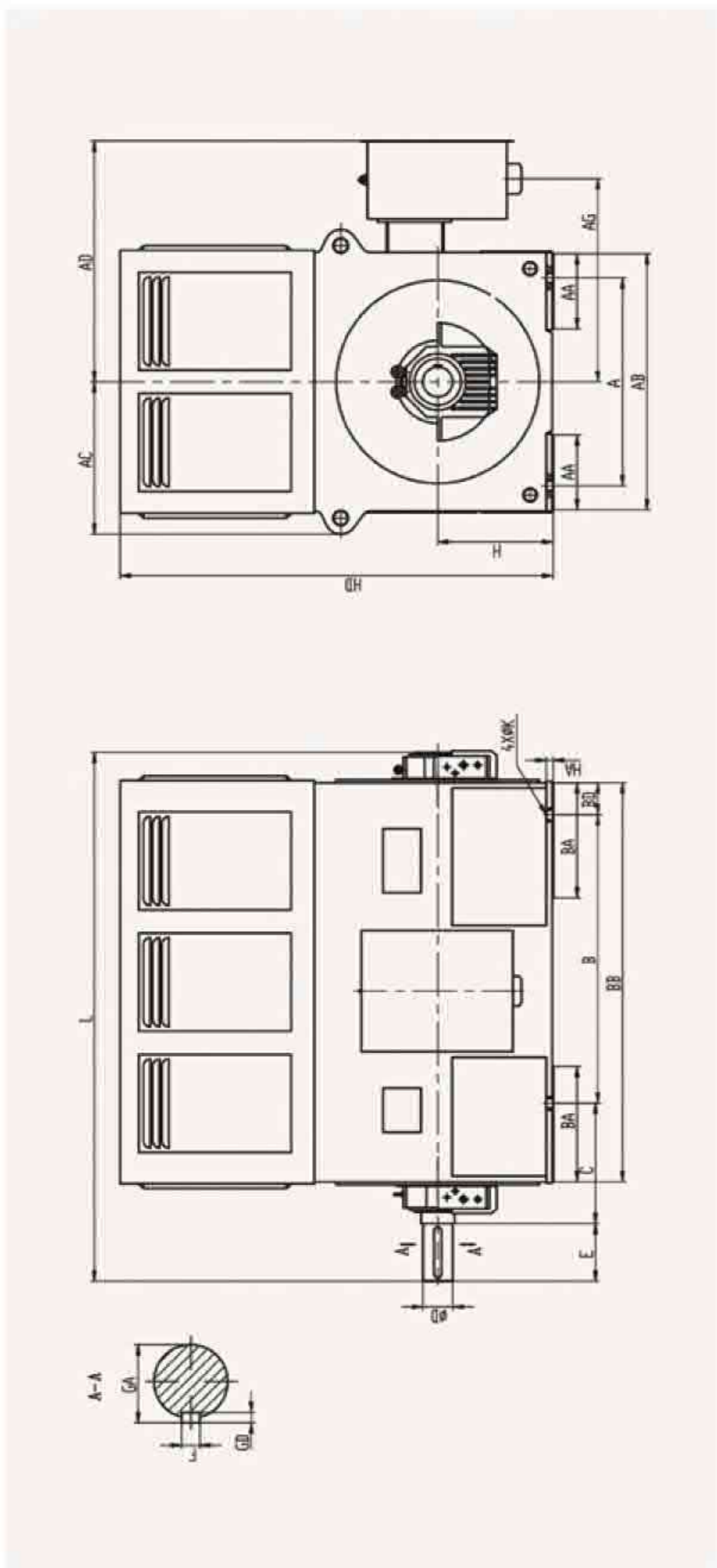
YX(IP23)系列中型电动机外形及安装尺寸图



机座号 Frame No.	极数 No. of pole	安装尺寸及公差 Mounting dimension											外形尺寸 Overall dimensions									
		A	B	C	D	E	F	GA	GD	H	K	AA	AB	AC	AD	AG	BA	BB	BD	HA	HD	L
355	2	630 ⁺¹⁴	900 ⁺¹⁴	315 ^{+4.0}	80 ^{+0.030} _{-0.011}	170 ^{+0.30}	22	85	14	355 ⁺⁰ _{-1.0}	28	155	800	500	850	620	510	1430	315	30	1120	1785
	4, 6	630 ⁺¹⁴	900 ⁺¹⁴	315 ^{+4.0}	100 ^{+0.035} _{-0.013}	210 ^{+0.37}	28	106	16	355 ⁺⁰ _{-1.0}	28	220	800	500	860	630	400	1300	200	30	1130	1705
400	2	710 ^{+17.5}	1000 ^{+17.5}	375 ^{+4.0}	90 ^{+0.035} _{-0.013}	170 ^{+0.30}	25	95	14	400 ⁺⁰ _{-1.0}	35	165	900	550	900	670	510	1500	230	30	1255	1865
	4, 6, 8	710 ^{+17.5}	1000 ^{+17.5}	335 ^{+4.0}	110 ^{+0.045} _{-0.013}	210 ^{+0.37}	28	116	16	400 ⁺⁰ _{-1.0}	35	255	900	550	910	680	400	1430	215	30	1260	1845
450	2	800 ^{+17.5}	1120 ^{+17.5}	400 ^{+4.0}	100 ^{+0.035} _{-0.013}	210 ^{+0.37}	28	106	16	450 ⁺⁰ _{-1.0}	35	165	1000	600	950	720	510	1650	235	35	1405	2055
	4	800 ^{+17.5}	1120 ^{+17.5}	355 ^{+4.0}	120 ^{+0.035} _{-0.013}	210 ^{+0.37}	32	127	18	450 ⁺⁰ _{-1.0}	35	290	1000	600	960	730	450	1620	250	30	1395	2020
500	6, 8, 10, 12	800 ^{+17.5}	1120 ^{+17.5}	355 ^{+4.0}	130 ^{+0.045} _{-0.013}	250 ^{+0.37}	32	137	18	450 ⁺⁰ _{-1.0}	35	290	1000	600	960	730	450	1620	250	30	1395	2060
	4	900 ⁺²¹	1250 ⁺²¹	475 ^{+4.0}	130 ^{+0.045} _{-0.013}	250 ^{+0.37}	32	137	18	500 ⁺⁰ _{-1.0}	42	335	1120	660	1020	790	500	1730	140	30	1555	2200
560	6, 8, 10, 12	900 ⁺²¹	1250 ⁺²¹	475 ^{+4.0}	140 ^{+0.045} _{-0.013}	250 ^{+0.37}	36	148	20	500 ⁺⁰ _{-1.0}	42	335	1120	660	1020	790	500	1730	140	30	1555	2200
	4	1000 ⁺²¹	1400 ⁺²¹	500 ^{+4.0}	150 ^{+0.045} _{-0.013}	250 ^{+0.37}	36	158	20	560 ⁺⁰ _{-1.0}	42	200	1260	760	1200	925	600	2010	305	45	1850	2600
630	6, 8, 10, 12	1000 ⁺²¹	1400 ⁺²¹	500 ^{+4.0}	160 ^{+0.045} _{-0.013}	300 ^{+0.65}	40	169	22	560 ⁺⁰ _{-1.0}	48	200	1260	760	1200	925	600	2010	305	45	1850	2650
	4	1120 ⁺²¹	1600 ⁺²¹	530 ^{+4.0}	170 ^{+0.045} _{-0.013}	300 ^{+0.65}	40	179	22	630 ⁺⁰ _{-1.0}	48	205	1310	785	1225	950	600	2200	300	45	2040	2820
630	6, 8, 10, 12	1120 ⁺²¹	1600 ⁺²¹	530 ^{+4.0}	180 ^{+0.045} _{-0.013}	300 ^{+0.65}	45	190	25	630 ⁺⁰ _{-1.0}	48	205	1310	785	1225	950	600	2200	300	45	2040	2820

YX系列6KV高效高压三相异步电动机

YX(IP23)系列中型电动机外形及安装尺寸图

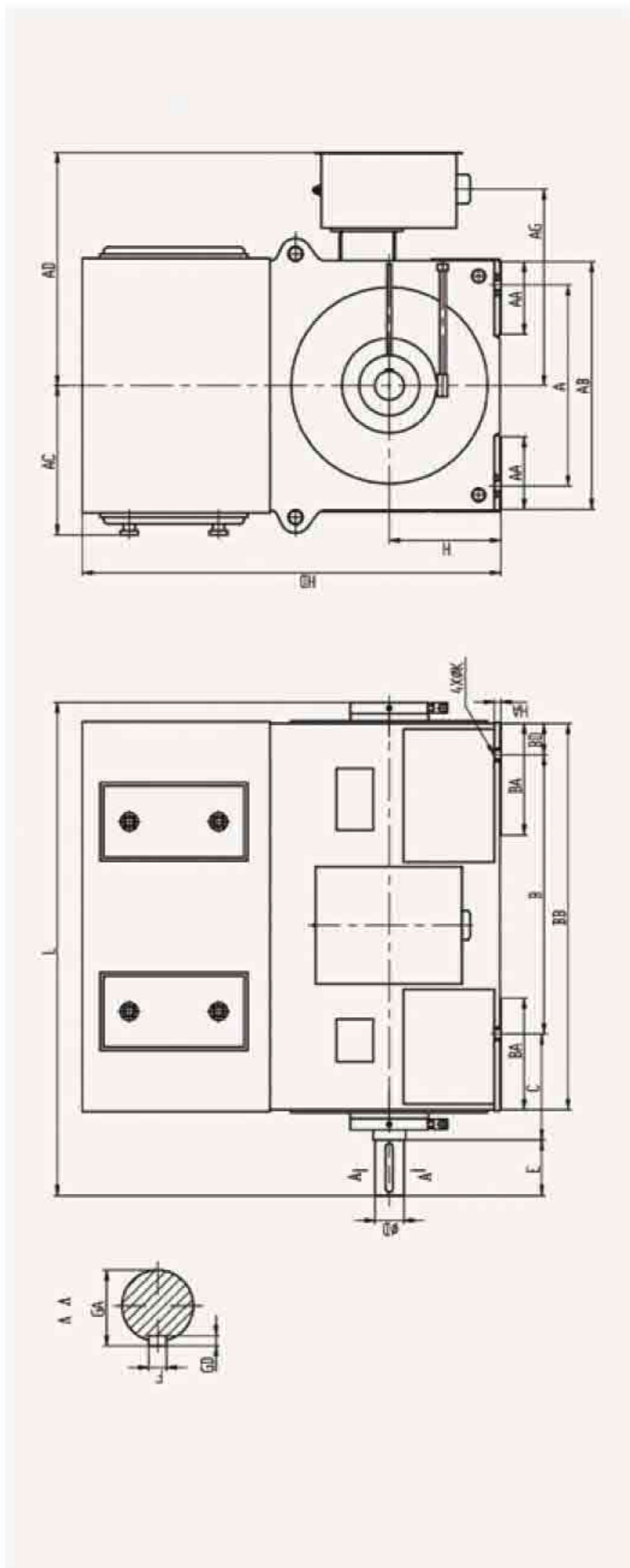


机座号 Frame No.	极数 No of pole	安装尺寸及公差 Mounting dimensions										外形尺寸 Overall dimensions										
		A	B	C	D	E	F	GA	GD	H	K	AA	AB	AC	AD	AG	BA	BB	BD	HA	HD	L
500	2	900 ⁺²¹	1250 ⁺²¹	560 ⁺⁴⁰	110 ^{+0.08} _{-0.11}	210 ^{+0.57}	28	116	16	500 ^{+0.5} _{-1.5}	42	165	1120	660	1010	780	660	1810	280	35	1560	2525
560	2	1000 ⁺²¹	1400 ⁺²¹	560 ⁺⁴⁰	130 ^{+0.08} _{-0.11}	250 ^{+0.57}	32	137	18	560 ^{+0.5} _{-1.5}	42	200	1260	760	1200	925	600	1990	295	52	1850	2730
630	2	1120 ⁺²¹	1600 ⁺²¹	560 ⁺⁴⁰	140 ^{+0.08} _{-0.11}	250 ^{+0.57}	36	148	20	630 ^{+0.5} _{-1.5}	48	205	1310	785	1225	950	600	2100	250	52	2040	2880
710	2	1400 ⁺²⁸	1800 ⁺²⁸	600 ⁺⁴⁰	170 ^{+0.08} _{-0.11}	300 ^{+0.65}	40	179	22	710 ^{+0.5} _{-1.5}	56	280	1800	930	1420	1100	700	2300	250	72	2500	3300



YXKS系列6KV高效高压三相异步电动机

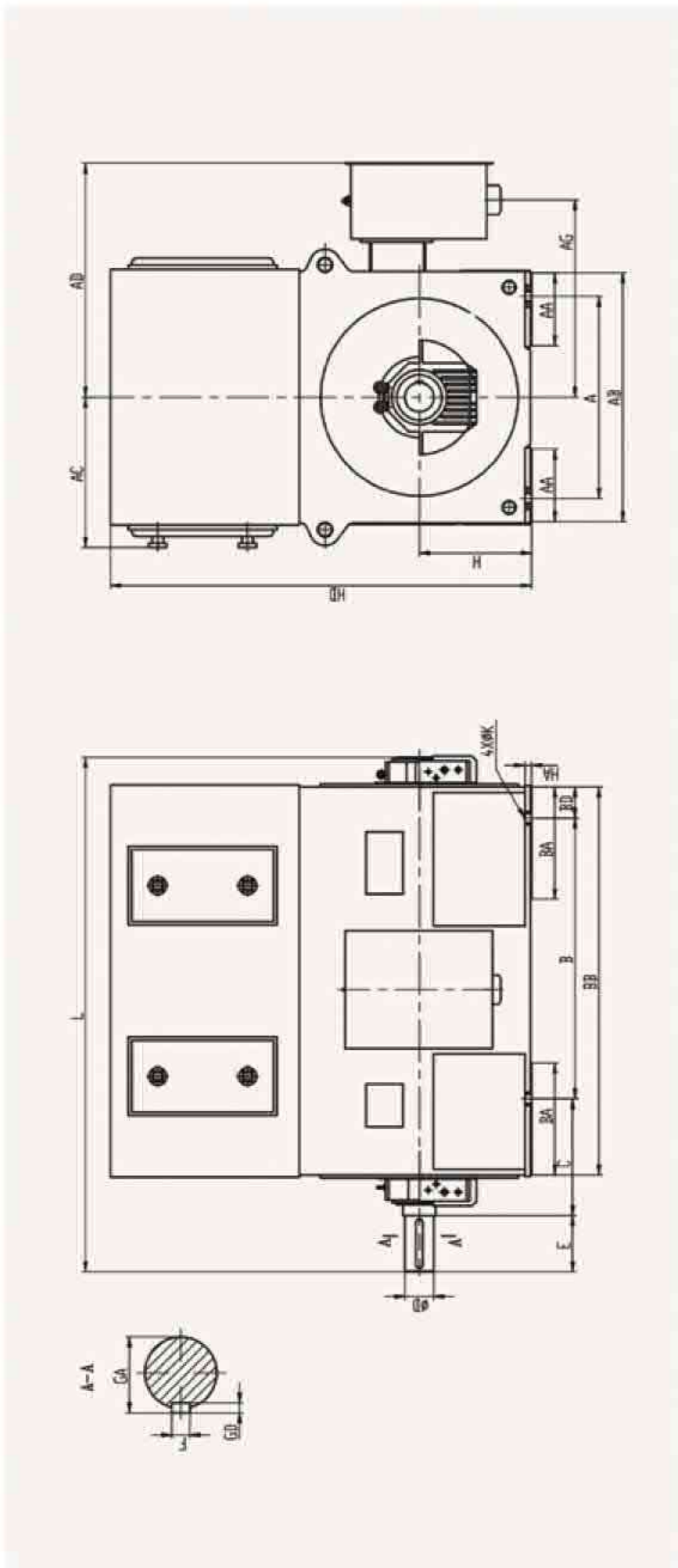
YXKS(IP44)系列中型电动机外形及安装尺寸图



机座号 Frame No.	极数 No. of pole	安装尺寸及公差 Mounting dimensions														外形尺寸 Overall dimensions						
		A	B	C	D	E	F	GA	GD	H	K	AA	AB	AC	AD	AG	BA	BB	BD	HA	HD	L
355	2	630 ^{+1.4}	900 ^{+1.4}	315 ^{+4.0}	80 ^{+0.200 -0.011}	170 ^{+0.50}	22	85	14	355 ^{+0.8}	28	155	800	575	850	620	510	1430	315	30	1250	1765
	4, 6	630 ^{+1.4}	900 ^{+1.4}	315 ^{+4.0}	100 ^{+0.200 -0.015}	210 ^{+0.57}	28	106	16	355 ^{+0.8}	28	220	800	575	860	630	400	1300	200	30	1260	1705
400	2	710 ^{+1.75}	1000 ^{+1.75}	375 ^{+4.0}	90 ^{+0.200 -0.015}	170 ^{+0.50}	25	95	14	400 ^{+1.6}	35	165	900	630	900	670	510	1500	230	30	1470	1865
	4, 6, 8	710 ^{+1.75}	1000 ^{+1.75}	335 ^{+4.0}	110 ^{+0.200 -0.015}	210 ^{+0.57}	28	110	16	400 ^{+1.6}	35	255	900	630	910	680	400	1430	215	30	1475	1845
450	2	800 ^{+1.75}	1120 ^{+1.75}	400 ^{+4.0}	100 ^{+0.200 -0.015}	210 ^{+0.57}	28	106	16	450 ^{+1.6}	35	165	1000	700	950	720	510	1650	235	35	1610	2055
	4	800 ^{+1.75}	1120 ^{+1.75}	355 ^{+4.0}	120 ^{+0.200 -0.015}	210 ^{+0.57}	32	127	18	450 ^{+1.6}	35	290	1000	700	960	730	450	1620	250	30	1600	2020
500	6, 8, 10, 12	800 ^{+1.75}	1120 ^{+1.75}	355 ^{+4.0}	130 ^{+0.200 -0.015}	250 ^{+0.57}	32	137	18	450 ^{+1.6}	35	290	1000	700	960	730	450	1620	250	30	1600	2060
	4	900 ^{+2.1}	1250 ^{+2.1}	475 ^{+4.0}	130 ^{+0.200 -0.015}	250 ^{+0.57}	32	137	18	500 ^{+1.6}	42	335	1120	760	1020	790	500	1730	140	30	1750	2200
560	6, 8, 10, 12	900 ^{+2.1}	1250 ^{+2.1}	475 ^{+4.0}	140 ^{+0.200 -0.015}	250 ^{+0.57}	36	148	20	500 ^{+1.6}	42	335	1120	760	1020	790	500	1730	140	30	1750	2200
	4	1000 ^{+2.1}	1400 ^{+2.1}	500 ^{+4.0}	150 ^{+0.200 -0.015}	250 ^{+0.57}	36	158	20	560 ^{+1.6}	42	200	1260	760	1200	925	600	2010	305	45	1950	2600
630	6, 8, 10, 12	1000 ^{+2.1}	1400 ^{+2.1}	500 ^{+4.0}	160 ^{+0.200 -0.015}	300 ^{+0.65}	40	169	22	560 ^{+1.6}	42	200	1260	760	1200	925	600	2010	305	45	1950	2650
	4	1120 ^{+2.1}	1600 ^{+2.1}	530 ^{+4.0}	170 ^{+0.200 -0.015}	300 ^{+0.65}	40	179	22	630 ^{+1.6}	48	205	1310	785	1225	950	600	2200	300	45	2040	2820
	6, 8, 10, 12	1120 ^{+2.1}	1600 ^{+2.1}	530 ^{+4.0}	180 ^{+0.200 -0.015}	300 ^{+0.65}	45	180	25	630 ^{+1.6}	48	205	1310	785	1225	950	600	2200	300	45	2040	2820

YXKS系列6KV高效高压三相异步电动机

YXKS(IP44)系列中型电动机外形及安装尺寸图

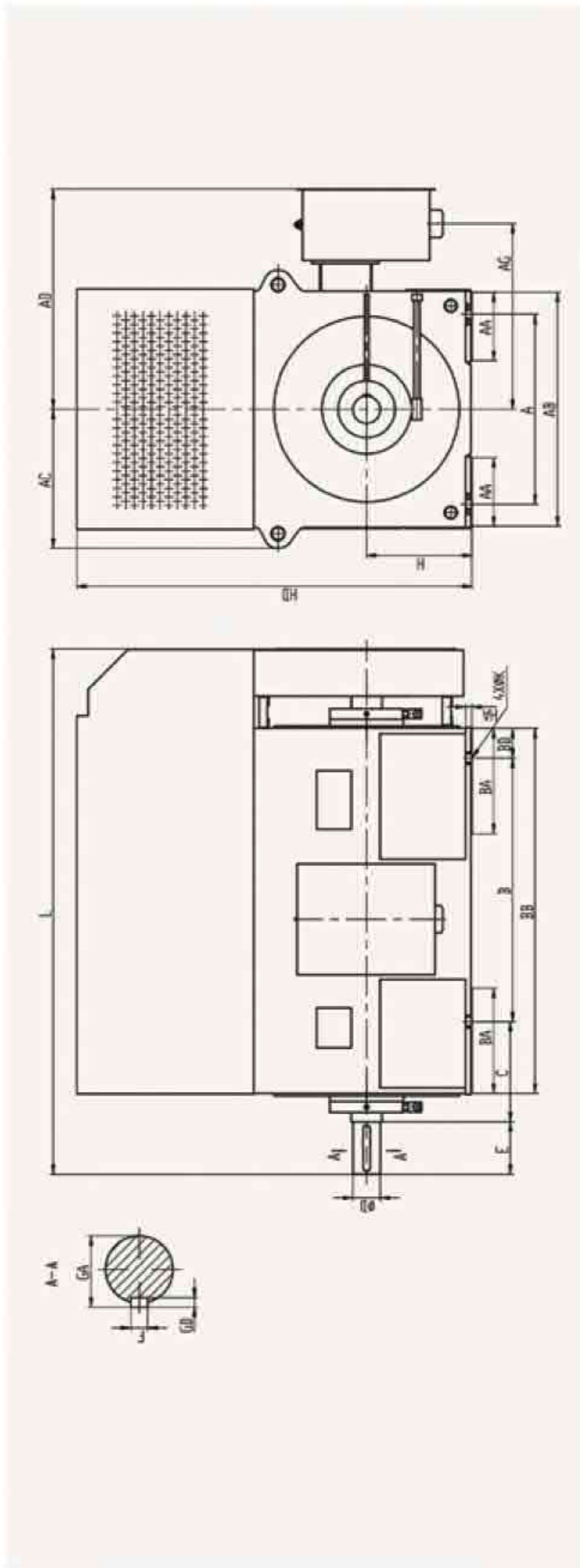


机座号 Frame No.	磁极数 No. of pole	安装尺寸及公差 Mounting dimensions										外形尺寸 Overall dimensions										
		A	B	C	D	E	F	GA	GD	H	K	AA	AB	AC	AD	AG	BA	BB	BD	HA	HD	L
500	2	900 ⁺²¹	1250 ⁺²¹	560 ^{+4.0}	110 ^{+0.015}	210 ^{+0.57}	28	116	16	500 ^{+1.5}	42	165	1120	760	1010	780	660	1810	280	35	1755	2525
560	2	1000 ⁺²¹	1400 ⁺²¹	560 ^{+4.0}	130 ^{+0.015}	250 ^{+0.57}	32	137	18	560 ^{+1.5}	42	200	1260	760	1200	925	600	1990	295	52	2010	2730
630	2	1120 ⁺²¹	1600 ⁺²¹	560 ^{+4.0}	140 ^{+0.015}	250 ^{+0.57}	36	148	20	630 ^{+1.5}	48	205	1310	765	1225	950	600	2100	250	52	2170	2880
710	2	1400 ⁺²⁸	1800 ⁺²⁸	600 ^{+4.2}	170 ^{+0.015}	300 ^{+0.66}	40	179	22	710 ^{+1.5}	56	280	1600	930	1420	1100	700	2300	250	72	2500	3300



YXKK系列6KV高效高压三相异步电动机

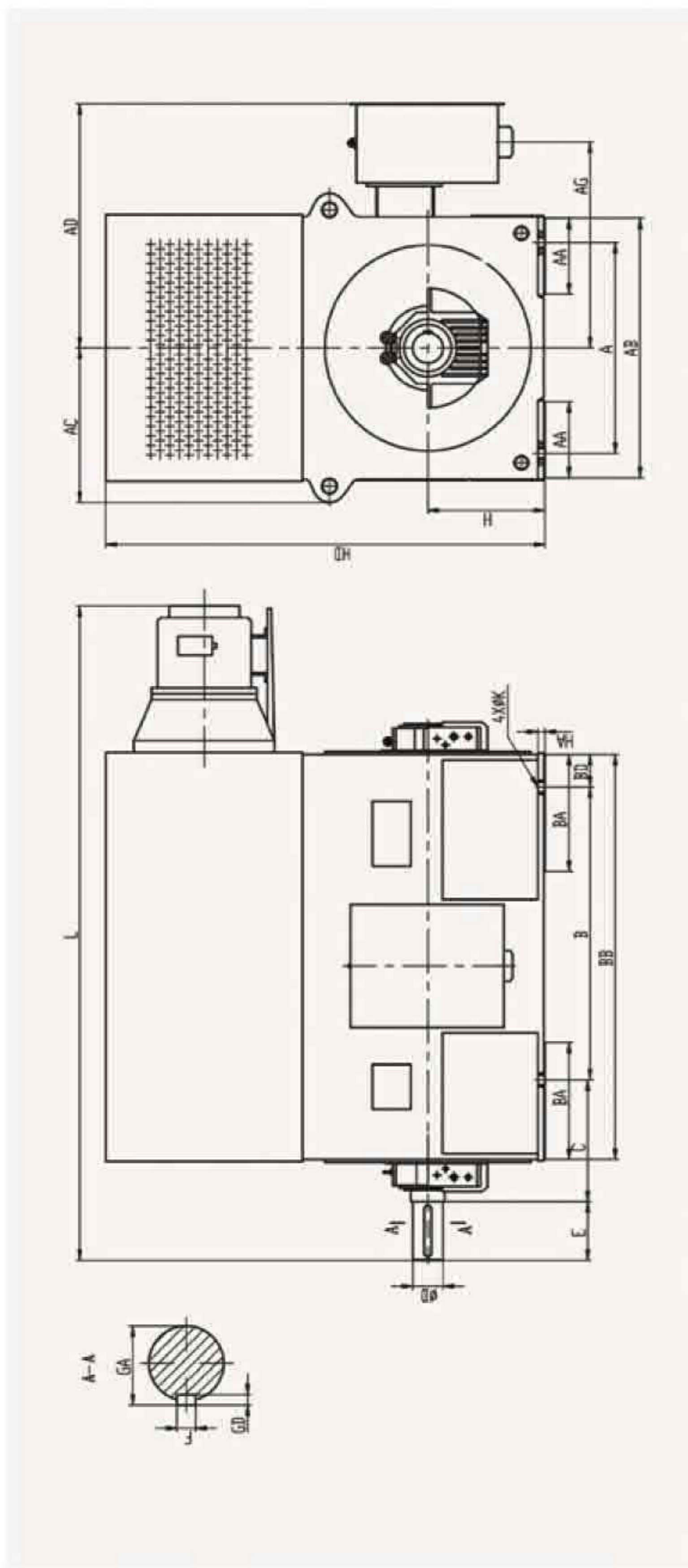
YXKK(IP54)系列中型电动机外形及安装尺寸图



机座号 Frame No.	极数 No. of pole	安装尺寸及公差 Mounting dimensions														外形尺寸 Overall dimensions						
		A	B	C	D	E	F	GA	GD	H	K	AA	AB	AC	AD	AG	BA	BB	BD	HA	HD	L
355	2	630 ⁺¹⁴	900 ⁺¹⁴	315 ⁺⁴⁰	80 ^{+0.030 -0.011}	170 ^{+0.30}	22	85	14	355 ^{0 -1.6}	28	155	600	500	850	620	510	1430	315	30	1375	1980
	4, 6	630 ⁺¹⁴	900 ⁺¹⁴	315 ⁺⁴⁰	100 ^{+0.030 -0.015}	210 ^{+0.37}	28	106	16	355 ^{0 -1.6}	28	220	800	500	860	630	400	1300	200	30	1385	1975
400	2	710 ^{+17.5}	1000 ^{+17.5}	375 ⁺⁴⁰	90 ^{+0.025 -0.015}	170 ^{+0.30}	25	95	14	400 ^{0 -1.6}	35	165	900	550	900	670	510	1500	230	30	1545	2075
	4, 6, 8	710 ^{+17.5}	1000 ^{+17.5}	335 ⁺⁴⁰	110 ^{+0.025 -0.015}	210 ^{+0.37}	28	116	16	400 ^{0 -1.6}	35	255	900	550	910	680	400	1430	215	30	1550	2130
450	2	800 ^{+17.5}	1120 ^{+17.5}	400 ⁺⁴⁰	100 ^{+0.030 -0.015}	210 ^{+0.37}	28	106	16	450 ^{0 -1.6}	35	165	1000	600	950	720	510	1650	235	35	1695	2300
	4	800 ^{+17.5}	1120 ^{+17.5}	355 ⁺⁴⁰	120 ^{+0.030 -0.015}	210 ^{+0.37}	32	127	18	450 ^{0 -1.6}	35	290	1000	600	960	730	450	1620	250	30	1685	2310
500	6, 8, 10, 12	800 ^{+17.5}	1120 ^{+17.5}	355 ⁺⁴⁰	130 ^{+0.040 -0.015}	250 ^{+0.37}	32	137	18	450 ^{0 -1.6}	35	290	1000	600	960	730	450	1620	250	30	1720	2350
	4	900 ⁺²¹	1250 ⁺²¹	475 ⁺⁴⁰	130 ^{+0.040 -0.015}	250 ^{+0.37}	32	137	18	500 ^{0 -1.6}	42	335	1120	660	1020	790	500	1730	140	30	1875	2505
560	6, 8, 10, 12	900 ⁺²¹	1250 ⁺²¹	475 ⁺⁴⁰	140 ^{+0.040 -0.015}	250 ^{+0.37}	36	148	20	500 ^{0 -1.6}	42	335	1120	660	1020	790	500	1730	140	30	1935	2505
	4	1000 ⁺²¹	1400 ⁺²¹	500 ⁺⁴⁰	150 ^{+0.040 -0.015}	250 ^{+0.37}	36	156	20	560 ^{0 -1.6}	42	200	1260	760	1200	925	600	2010	305	45	2290	2950
630	6, 8, 10, 12	1000 ⁺²¹	1400 ⁺²¹	500 ⁺⁴⁰	160 ^{+0.040 -0.015}	300 ^{+0.66}	40	169	22	560 ^{0 -1.6}	42	200	1260	760	1200	925	600	2010	305	45	2290	3000
	4	1120 ⁺²¹	1600 ⁺²¹	530 ⁺⁴⁰	170 ^{+0.040 -0.015}	300 ^{+0.66}	40	179	22	630 ^{0 -1.6}	48	205	1310	785	1225	950	600	2200	300	45	2490	3260
	6, 8, 10, 12	1120 ⁺²¹	1600 ⁺²¹	530 ⁺⁴⁰	180 ^{+0.040 -0.015}	300 ^{+0.66}	45	190	25	630 ^{0 -1.6}	48	205	1310	785	1225	950	600	2200	300	45	2490	3280

YXKK系列6KV高效高压三相异步电动机

YXKK(IP54)系列中型电动机外形及安装尺寸图

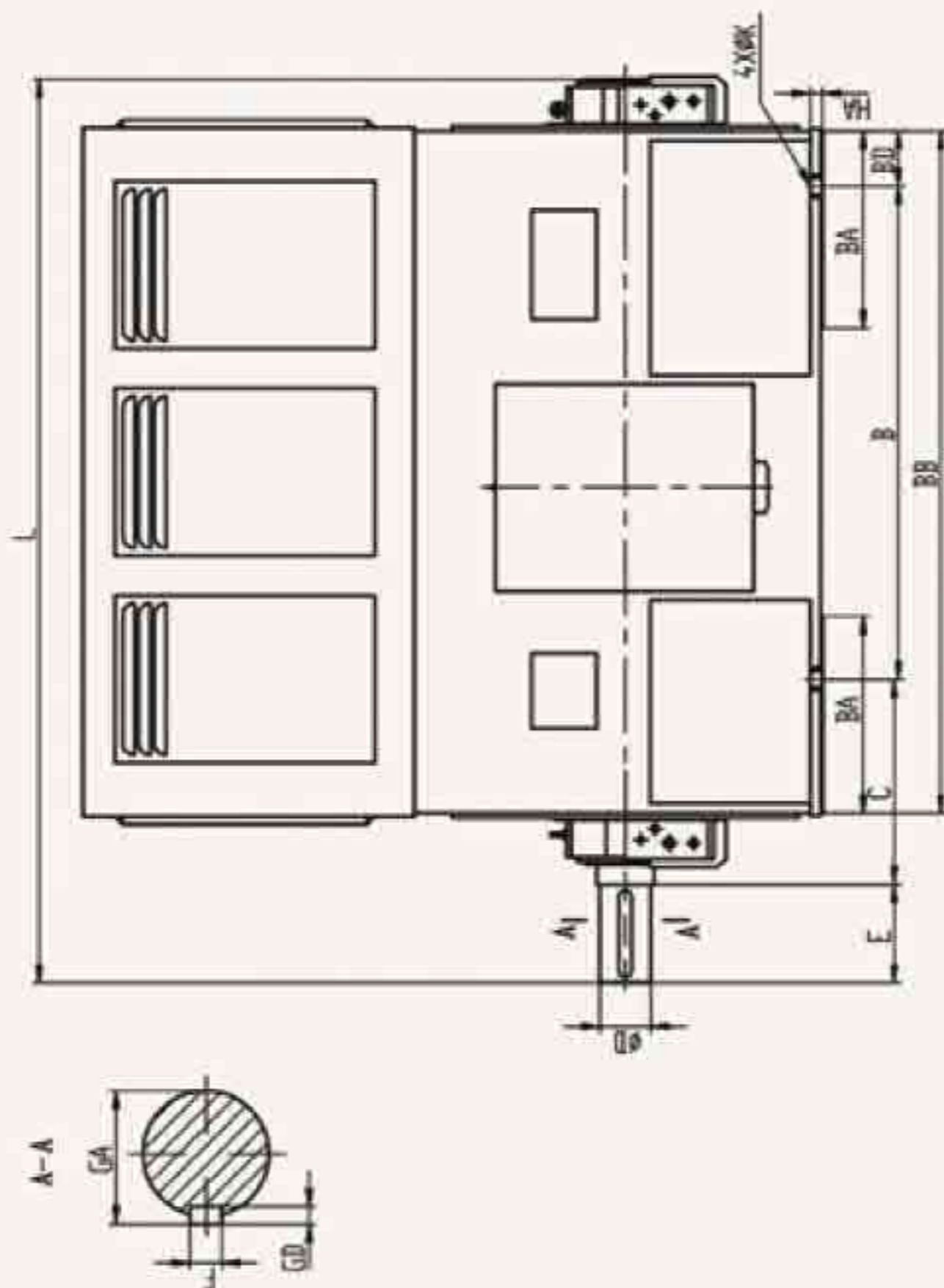
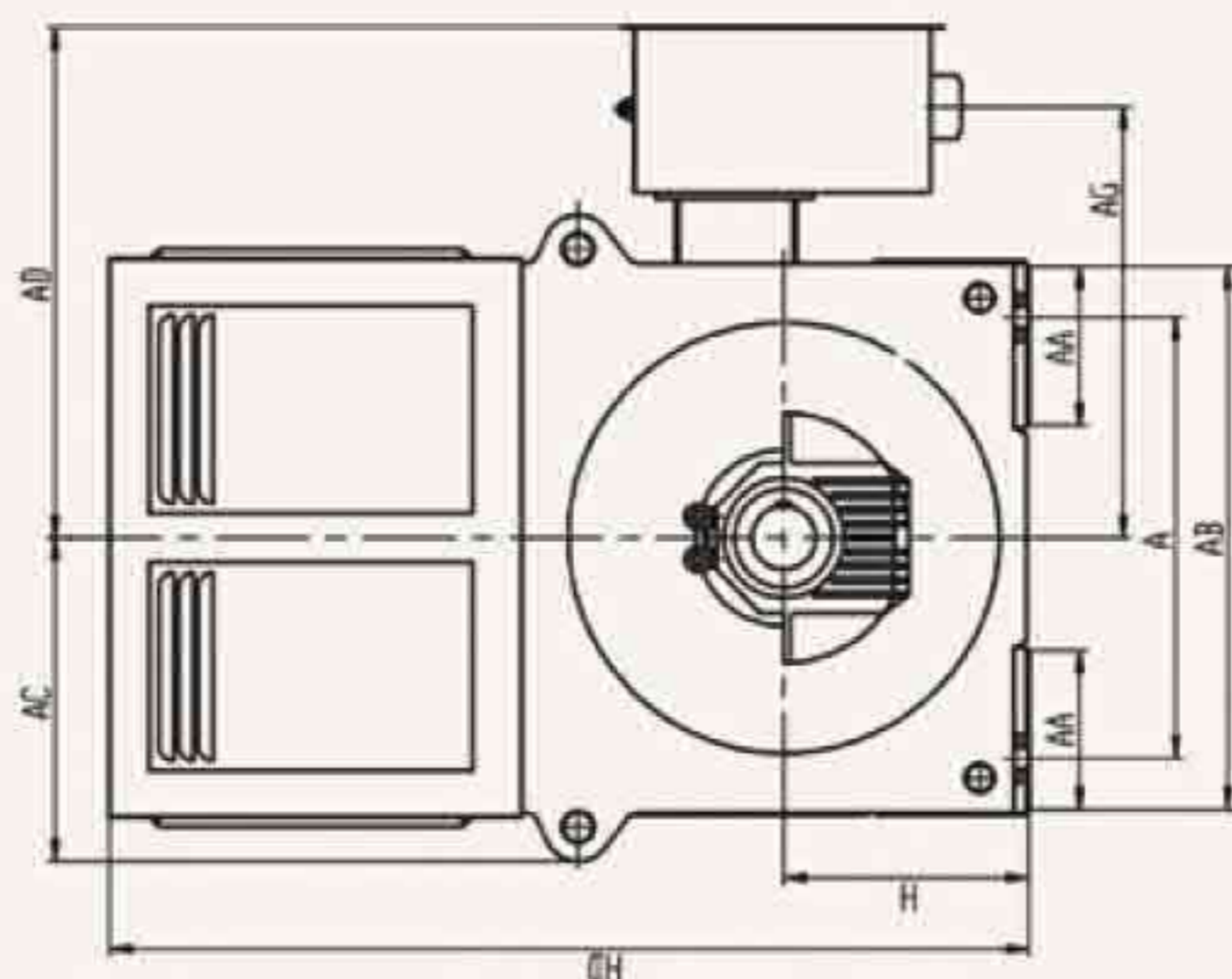


机座号 Frame No.	极数 No. of poles	安装尺寸及公差 Mounting dimensions														外形尺寸 Overall dimensions						
		A	B	C	D	E	F	GA	GD	H	K	AA	AB	AC	AD	AG	BA	BB	BD	HA	HD	L
500	2	900±21	1250±21	560+4.0	110 ^{+0.035} _{-0.073}	210±0.07	28	116	16	500 ^{+0.6} _{-1.0}	42	165	1120	660	1010	780	660	1810	280	35	1960	3155
560	2	1000±21	1400±21	560±4.0	130 ^{+0.045} _{-0.095}	250±0.07	32	137	18	560 ^{+0.6} _{-1.0}	42	200	1260	760	1200	925	600	1990	295	52	2120	3510
630	2	1120±21	1600±21	560±4.0	140 ^{+0.060} _{-0.075}	250±0.07	36	148	20	630 ^{+0.6} _{-1.0}	46	205	1310	785	1225	950	600	2100	250	52	2530	3560



YX系列6KV高效高压三相异步电动机

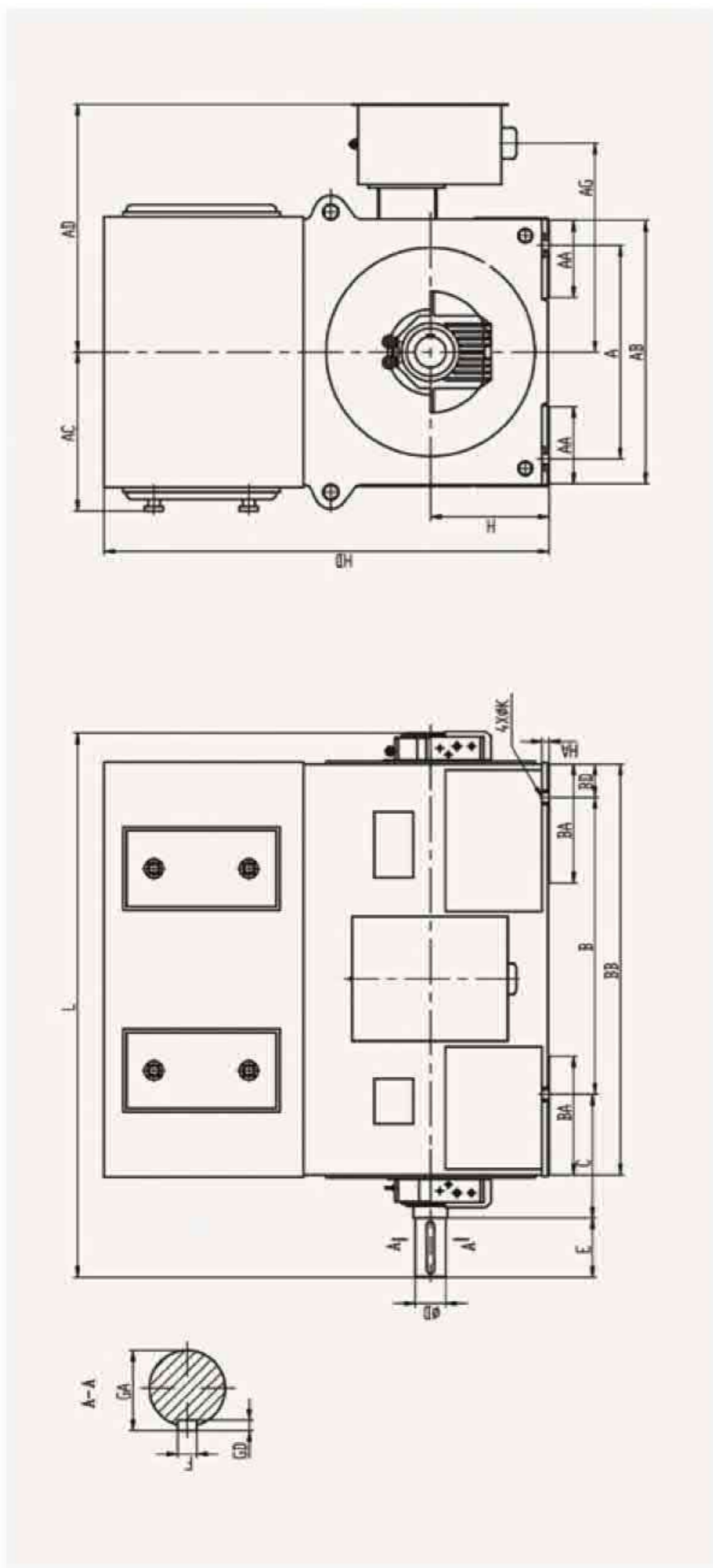
YX(IP23)系列大型电动机外形及安装尺寸图



机座号 Frame No.	安装尺寸及公差 Mounting dimensions											外形尺寸 Overall dimensions									
	A	B	C	D	E	F	GA	GD	H	K	AA	AB	AC	AD	AG	BA	BB	BD	HA	HD	L
710	1400 ⁺²⁸	1800 ⁺²⁸	530 ⁺⁴²	220 ^{+0.045 -0.017}	350 ^{+0.70}	45	210	25	710 ^{0 -1.5}	56	280	1600	930	1500	1135	560	2390	295	61	2400	3200
800	1600 ⁺²⁸	2000 ⁺²⁸	530 ⁺⁴²	220 ^{+0.045 -0.017}	350 ^{+0.70}	50	231	28	800 ^{0 -1.5}	56	280	1860	1100	1600	1265	560	2590	345	70	3300	3500
900	1800 ⁺³⁵	2240 ⁺³⁵	600 ⁺⁴²	250 ^{+0.045 -0.017}	410 ^{+0.77}	56	262	32	900 ^{0 -1.5}	66	310	2050	1200	1700	1355	600	2790	275	70	3500	3800
1000	2000 ⁺³⁵	2500 ⁺³⁵	600 ⁺⁴²	280 ^{+0.052 -0.020}	470 ^{+0.77}	63	292	32	1000 ^{0 -1.5}	66	310	2250	1300	1800	1450	600	2990	245	70	3800	4200

YXKS系列6KV高效高压三相异步电动机

YXKS(IP44)系列大型电动机外形及安装尺寸图

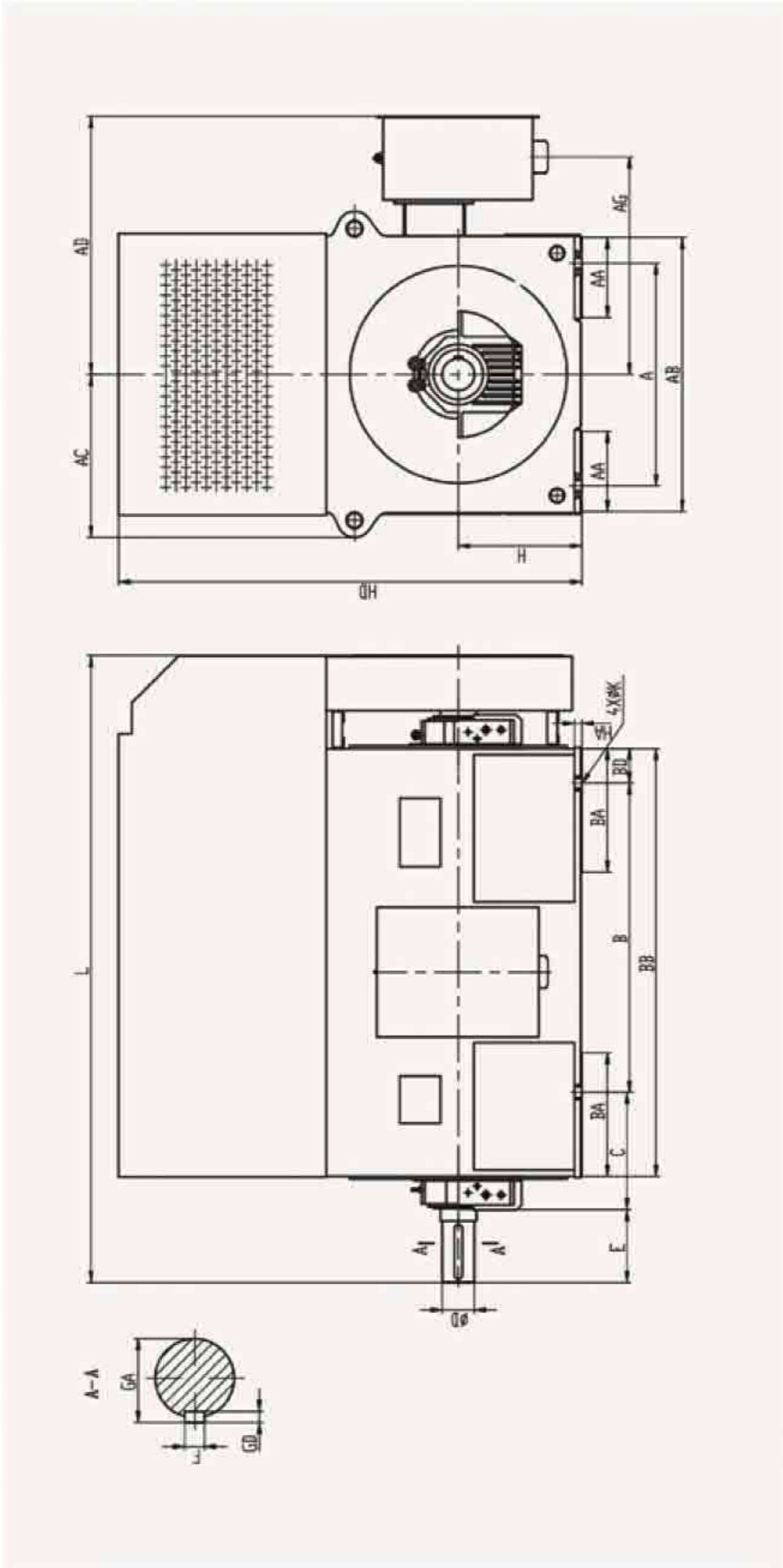


机座号 Frame No.	安装尺寸及公差 Mounting dimensions													外形尺寸 Overall dimensions							
	A	B	C	D	E	F	GA	GD	H	K	AA	AB	AC	AD	AG	BA	BB	BD	HA	HD	L
710	1400 ⁺²⁸	1800 ⁺²⁸	530 ⁺⁴²	200 ^{+0.04 -0.017}	350 ^{+0.70}	45	210	25	710 ^{+1.5}	56	280	1800	930	1500	1135	560	2390	295	61	2400	3200
800	1600 ⁺²⁸	2000 ⁺²⁸	530 ⁺⁴²	220 ^{+0.06 -0.017}	350 ^{+0.70}	50	231	28	800 ^{+1.5}	56	280	1880	1100	1600	1265	560	2590	345	70	3300	3500
900	1800 ⁺³⁵	2240 ⁺³⁵	600 ⁺⁴²	250 ^{+0.06 -0.017}	410 ^{+0.77}	58	262	32	900 ^{+1.5}	66	310	2060	1200	1700	1355	600	2790	275	70	3500	3800
1000	2000 ⁺³⁵	2500 ⁺³⁵	600 ⁺⁴²	280 ^{+0.06 -0.017}	470 ^{+0.77}	63	292	32	1000 ^{+1.5}	66	310	2250	1300	1800	1450	600	2990	245	70	3800	4200



YXKK系列6KV高效高压三相异步电动机

YXKK(IP54)系列大型电动机外形及安装尺寸图



机座号 Frame No.	安装尺寸及公差 Mounting dimensions										外形尺寸 Overall dimensions										
	A	B	C	D	E	F	GA	GD	H	K	AA	AB	AC	AD	AG	BA	BB	BD	HA	HD	L
710	1400±2.8	1800±2.8	530+42	220 ^{+0.045} _{-0.017}	350±0.70	45	210	25	710 ⁺⁰ _{-1.5}	56	280	1800	930	1500	1135	560	2390	295	61	2710	3580
800	1600±2.8	2000±2.8	530+42	220 ^{+0.045} _{-0.017}	350±0.70	50	231	28	800 ⁺⁰ _{-1.5}	56	280	1860	1100	1600	1265	560	2590	345	70	3300	3900
900	1800±3.5	2240±3.5	600+42	250 ^{+0.045} _{-0.017}	410±0.77	56	262	32	900 ⁺⁰ _{-1.5}	66	310	2060	1200	1700	1355	600	2790	275	70	3500	4400
1000	2000±3.5	2500±3.5	600+42	280 ^{+0.045} _{-0.020}	470±0.77	63	292	32	1000 ⁺⁰ _{-1.5}	66	310	2250	1300	1800	1450	600	2990	245	70	4100	4700